

**CORRECTIVE SERVICES**

AUSTRALIA

EMBARGO: 11.30AM (CANBERRA TIME) THURS 17 MAR 2011

**C O N T E N T S**

	<i>page</i>
Notes .....	2
Summary of findings .....	3

**T A B L E S**

<b>1</b> Persons in corrective services, summary .....	9
<b>2</b> Persons in full-time custody .....	11
<b>3</b> Imprisonment rates .....	12
<b>4</b> Persons in full-time custody, by sex .....	13
<b>5</b> Imprisonment rates, by sex .....	14
<b>6</b> Persons in full-time custody, by type of custody .....	15
<b>7</b> Imprisonment rates, by type of custody .....	16
<b>8</b> Persons in full-time custody, by legal status .....	17
<b>9</b> Imprisonment rates, by legal status .....	18
<b>10</b> Sentenced prisoner receptions into full-time custody .....	19
<b>11</b> Persons in periodic detention, by sex .....	20
<b>12</b> Federal sentenced persons in full-time custody, by sex .....	21
<b>13</b> Aboriginal and Torres Strait Islander persons in full-time custody, by sex ..	22
<b>14</b> Aboriginal and Torres Strait Islander imprisonment rates, by sex .....	23
<b>15</b> Aboriginal and Torres Strait Islander persons in full-time custody, by legal status .....	24
<b>16</b> Aboriginal and Torres Strait Islander imprisonment rates, by legal status ..	25
<b>17</b> Persons in community-based corrections, by sex .....	26
<b>18</b> Community-based corrections rates, by sex .....	27
<b>19</b> Persons in community-based corrections, by type of order .....	28

**I N Q U I R I E S**

For further information about these and related statistics, contact the National Information and Referral Service on 1300 135 070 or Paul Romanis on Melbourne (03) 9615 7362.

**A D D I T I O N A L I N F O R M A T I O N**

Explanatory Notes .....	30
Appendix Experimental Community-Based Corrections Data .....	37
Glossary .....	41

# NOTES

## FORTHCOMING ISSUES

<i>ISSUE (Quarter)</i>	<i>RELEASE DATE</i>
March 2011	15 June 2011
June 2011	15 September 2011

## ABOUT THIS PUBLICATION

This publication presents information on persons in custody and community-based corrections. The statistics are derived from information provided to the Australian Bureau of Statistics (ABS) from administrative records held by corrective services agencies in each state and territory, and from the Australian Government Attorney-General's Department for details on federal prisoners. Details are provided for each state and territory on: prisoner numbers and imprisonment rates by type of custody; prisoner numbers by legal status for all prisoners and for Aboriginal and Torres Strait Islander prisoners; the number of sentenced receptions into custody; the number of federal prisoners; and the numbers and rates of persons serving community-based corrections orders. Experimental data on the Aboriginal and Torres Strait Islander status of persons in community-based corrections are also included in the Appendix.

The ABS acknowledges the valuable contribution of the Board of Management and the Advisory Group of the National Corrective Services Statistics Unit as well as the staff of the various agencies that provide the statistics that are presented in this publication.

## FURTHER INFORMATION

More information about ABS activities in the field of crime and justice statistics is available from the Crime and Justice theme page on the ABS website <[www.abs.gov.au](http://www.abs.gov.au)>. Details of other ABS publications relating to Crime and Justice statistics can be found in paragraphs 41-43 of the Explanatory Notes.

## ABBREVIATIONS

ABS	Australian Bureau of Statistics
ACT	Australian Capital Territory
Aust.	Australia
ERP	estimated resident population
NCCJS	National Centre for Crime and Justice Statistics, Australian Bureau of Statistics
NSW	New South Wales
NT	Northern Territory
Qld	Queensland
SA	South Australia
Tas.	Tasmania
Vic.	Victoria
WA	Western Australia

Brian Pink  
Australian Statistician

## SUMMARY OF FINDINGS

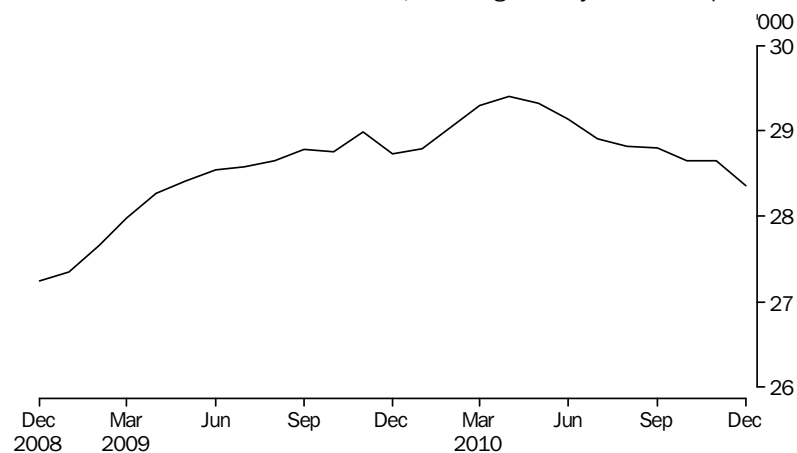
### PERSONS IN CORRECTIVE SERVICES

Based on first day of the month averages, for the December quarter 2010, there were 84,551 persons under the authority of corrective services (excluding those in periodic detention). The total comprised 28,656 persons in full-time custody and 55,895 persons in community-based corrections. This represents a decrease of 2% (1,614 persons) from the December quarter 2009. Over the same period, persons in full-time custody decreased by 1% (214 persons) and persons in community-based corrections decreased by 3% (1,400 persons).

#### *Number of prisoners*

During the December quarter 2010, the average daily number of full-time prisoners in Australia was 28,553 persons. This was an decrease of 1% from both the September quarter 2010 and the December quarter 2009.

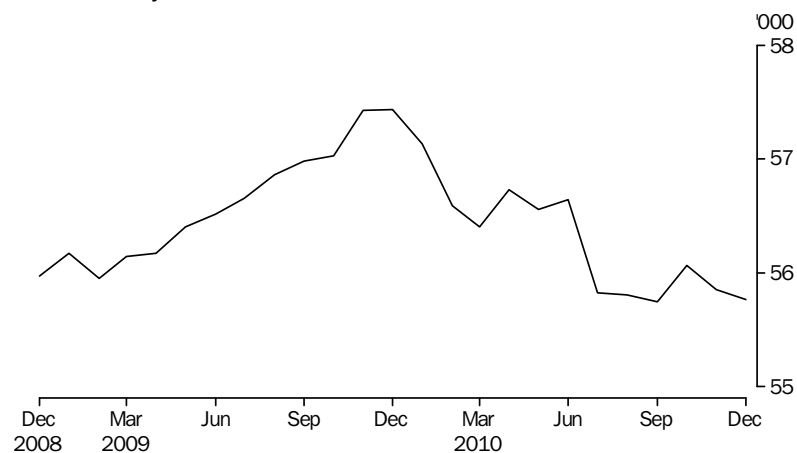
#### PERSONS IN PRISON CUSTODY, Average daily number per month



#### *Number of persons in community-based corrections*

Community-based corrections orders are non-custodial orders served under the authority of adult corrective services agencies and include restricted movement, reparations (fine options and community service) and supervision orders (parole, bail, and sentenced probation). In the December quarter 2010, there were 55,895 persons in community-based corrections in Australia based on first day of the month averages, a decrease of 1% (651 persons) from the September quarter 2010.

#### PERSONS IN COMMUNITY-BASED CORRECTIONS, Average number on the first day of the month



## SUMMARY OF FINDINGS *continued*

### PERSONS IN CUSTODY

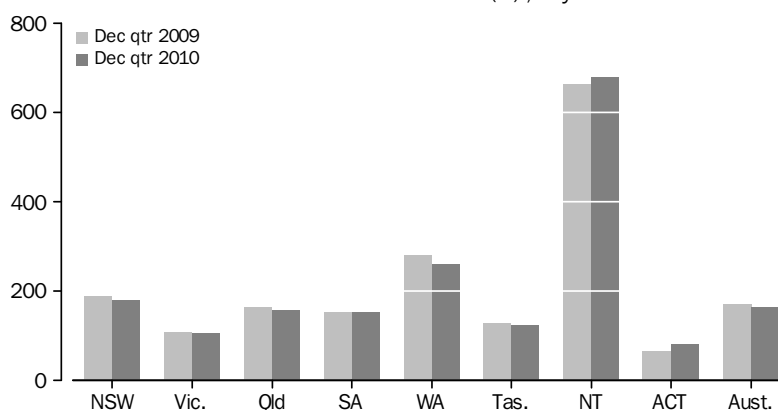
#### *Rates per 100,000 adults*

Nationally, the December quarter 2010 average daily imprisonment rate was 165 prisoners per 100,000 adult population, a decrease of 3% from the December quarter 2009. The Northern Territory had the highest imprisonment rate (679 prisoners per 100,000 adult population), followed by Western Australia (260) and New South Wales (180).

The Australian Capital Territory and Victoria had the lowest imprisonment rates (80 and 106 prisoners per 100,000 adult population respectively).

The Australian Capital Territory recorded the largest proportional increase in imprisonment rates from the December quarter 2009 (22%). The largest proportional decrease over the same period was recorded in Western Australia (7%).

#### AVERAGE DAILY IMPRISONMENT RATE(a), By states and territories



(a) Rate per 100,000 adult population.

#### Sex

Of the average daily number of full-time prisoners in Australia in the December quarter 2010, 26,500 (93%) were male and 2,053 (7%) were female. The average daily imprisonment rate for males was 311 prisoners per 100,000 adult male population; 13 times more than the rate for females (23 female prisoners per 100,000 adult female population).

#### *Type of full-time custody*

The average daily number of prisoners in secure prison custody in the December quarter 2010 was 22,292 (78% of prisoners in full-time custody). Open prison custody comprised 6,261 prisoners (22%).

All prisoners in the Australian Capital Territory are in secure prison custody. Queensland had the next highest proportions of prisoners in secure custody (91%), followed by South Australia and Tasmania (both 90%); and Victoria (89%).

#### *Legal status*

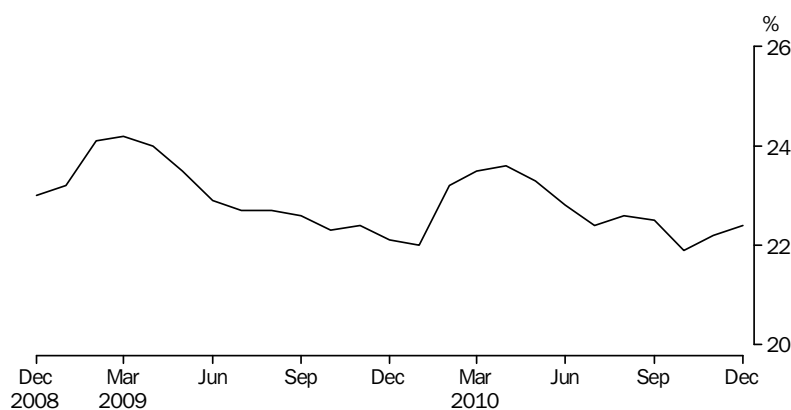
The average number of prisoners in full-time custody on the first day of each month in the December quarter 2010 was 28,656, comprising an average of 22,299 (78%) sentenced and 6,357 (22%) unsentenced prisoners. Sentenced prisoners decreased by 1% from both the previous quarter and from the December quarter 2009.

## SUMMARY OF FINDINGS *continued*

### *Legal status continued*

Unsentenced prisoners decreased by 1% from both the previous quarter and from the December quarter 2009. The Australian Capital Territory and South Australia had the highest proportions of unsentenced prisoners (37% and 34% respectively). The lowest proportions of unsentenced prisoners were recorded in Victoria and Western Australia (18% and 16% respectively).

### PROPORTION OF UNSENTENCED PERSONS IN PRISON CUSTODY (a), Per month



(a) Based on average number on the first day of the month

### *Sentenced prisoner receptions*

There were 7,429 sentenced prisoner receptions into full-time custody in Australia in the December quarter 2010; a decrease of 5% (391) from the September quarter 2010 and a decrease of 1% (53) from the December quarter 2009.

### *Periodic detention*

Periodic detention is a form of custody or order where a sentenced prisoner is required to be held in custody on a part-time basis. This type of custody order is currently only used in New South Wales and the Australian Capital Territory. This program has ceased in New South Wales from October 2010.

During the December quarter 2010 there was an average daily number of 475 persons in New South Wales and 54 persons in the Australian Capital Territory held in periodic detention. The rate of imprisonment for periodic detainees decreased by 29% in New South Wales from the September quarter 2010, and remained unchanged in the Australian Capital Territory.

### *Federal prisoners*

In the December quarter 2010, there were 844 federal sentenced prisoners in Australia based on first day of the month figures, an increase of 11% from the December quarter 2009. Just under half (418) of the federal prisoners were sentenced in New South Wales.

### *Aboriginal and Torres Strait Islander prisoners*

The average daily number of full-time Aboriginal and Torres Strait Islander adult prisoners in Australia in the December quarter 2010 was 7,413, comprising 6,795 (92%) males and 618 (8%) females. Aboriginal and Torres Strait Islander prisoners represented 26% of the total full-time prisoner population in the December quarter 2010, the same proportion as for the September quarter 2010. The total Aboriginal and Torres Strait Islander population aged 18 years and over at 31 December 2010 was 2% of the Australian population.

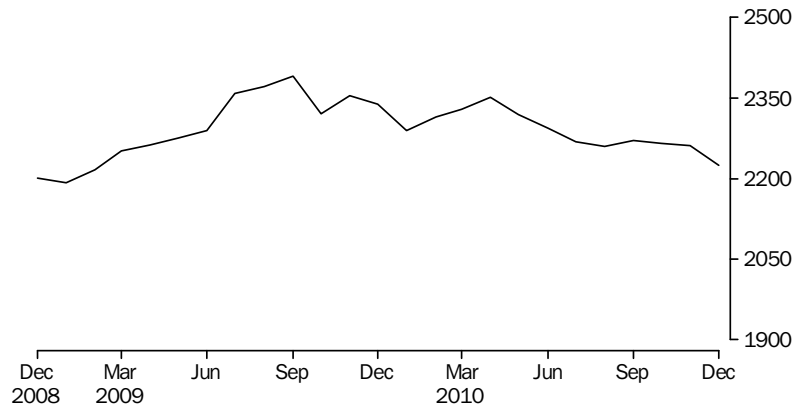
## SUMMARY OF FINDINGS *continued*

### *Aboriginal and Torres Strait Islander prisoners continued*

Approximately 76% of the total Aboriginal and Torres Strait Islander prisoner population was located in the states of New South Wales (2,200), Western Australia (1,749) and Queensland (1,649).

The national average daily Aboriginal and Torres Strait Islander imprisonment rate in the December quarter 2010 was 2,250 per 100,000 adult Aboriginal and Torres Strait Islander population, a decrease of 1% from the previous quarter and by 4% from the December quarter 2009.

#### AVERAGE DAILY ABORIGINAL AND TORRES STRAIT ISLANDER IMPRISONMENT RATE (a), Per month



(a) Rate per 100,000 adult Aboriginal and Torres Strait Islander population.

Different age profiles of the Aboriginal and Torres Strait Islander and non-Indigenous population can affect the imprisonment rate numbers. The quarterly collection is unable to take age into account; however, data from the Prisoner Census collection can provide this level of detail.

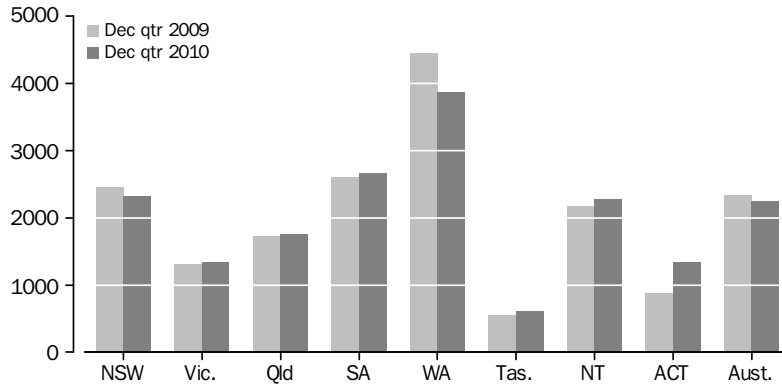
The national age standardised Aboriginal and Torres Strait Islander imprisonment rate from the annual Prisoner Census conducted at June 2010 was 14 times higher (1,892 per 100,000 adult Aboriginal and Torres Strait Islander population) than the rate for non-Indigenous persons (134 per 100,000 adult non-Indigenous population). Further information on the comparison of imprisonment rates between Aboriginal and Torres Strait Islander and non-Indigenous populations can be found in *Prisoners in Australia, 2009* (cat.no.4517.0).

The highest Aboriginal and Torres Strait Islander imprisonment rate was recorded in Western Australia (3,870 Aboriginal and Torres Strait Islander prisoners per 100,000 adult Aboriginal and Torres Strait Islander population), followed by South Australia (2,665) and New South Wales (2,326). The lowest Aboriginal and Torres Strait Islander imprisonment rate was recorded in Tasmania (602), followed by Victoria (1,333).

**SUMMARY OF FINDINGS** *continued*

Aboriginal and Torres Strait Islander prisoners  
*continued*

**AVERAGE DAILY ABORIGINAL AND TORRES STRAIT ISLANDER IMPRISONMENT RATE(a), By states and territories**



(a) Rate per 100,000 adult Aboriginal and Torres Strait Islander population.

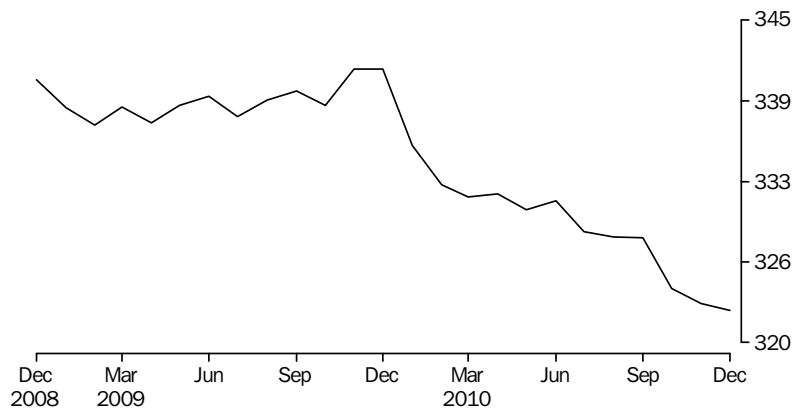
The largest proportional increase in the Aboriginal and Torres Strait Islander imprisonment rate from the December quarter 2009 was recorded in the Australian Capital Territory (52%), followed by Tasmania (9%). New South Wales (6%) and Western Australia (13%) recorded the only proportional decreases over the same period.

**PERSONS IN COMMUNITY-BASED CORRECTIONS**

*Rates per 100,000 adults*

Nationally, the rate of persons in community-based corrections was 323 persons per 100,000 adult population for the December quarter 2010 based on first day of the month figures. This was a decrease of 5% from the December quarter 2009 (340 persons per 100,000 adults). The largest decrease from the December quarter 2009 was recorded in Western Australia (16%), while the largest increase was recorded in Tasmania (21%).

**COMMUNITY-BASED CORRECTIONS RATE(a), Per month**

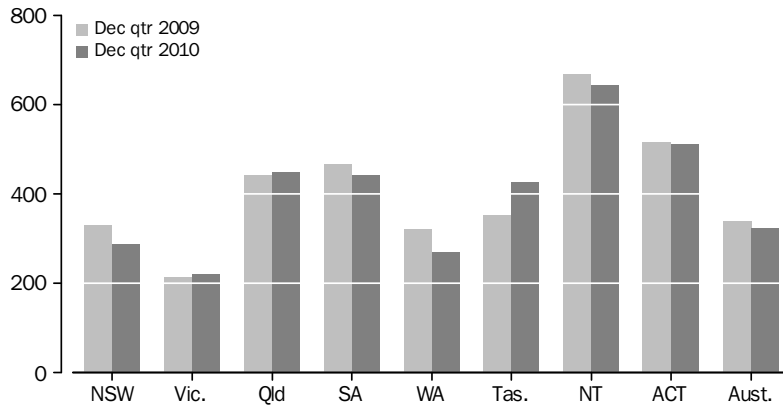


(a) Rate per 100,000 adult population, based on average number on the first day of the month

## SUMMARY OF FINDINGS *continued*

*Rates per 100,000 adults  
continued*

### COMMUNITY-BASED CORRECTIONS RATE(a), By states and territories



(a) Rate per 100,000 adult population, based on average number on the first day of the month

#### Sex

Of the average number of persons in community-based corrections in Australia in the December quarter 2010, 45,644 (82%) were male and 10,198 (18%) were female.

In the December quarter 2010, the rate of community-based corrections for males was 535 per 100,000 adult male population compared to 116 females per 100,000 adult female population. The community-based corrections rate for males was more than four times that of females.

#### Type of orders

In the December quarter 2010, there were 12,034 persons on parole following a period of imprisonment, an increase of 1% from the September quarter 2010. Three states accounted for over 80% of persons serving parole orders: New South Wales (4,330 or 36%), Queensland (4,329 persons or 36%), and Victoria (1,541 or 13%). The largest proportional decrease in parole orders from the September quarter 2010 was recorded in the Northern Territory (13%).

For this same period, there were 33,757 persons under sentenced probation and 9,854 persons serving community service orders; a decrease of 1% and 3% respectively from the September quarter 2010.



## PERSONS IN CORRECTIVE SERVICES, Summary(a)

	NSW	Vic.	Qld	SA	WA	Tas.	NT	ACT	Aust.
AVERAGE DAILY NUMBER									
<b>Males in full-time custody</b>									
Dec Qtr 09	9 528	4 193	5 118	1 821	4 398	456	1 028	164	26 704
Sep Qtr 10	9 459	4 260	5 158	1 841	4 294	459	1 052	200	26 723
Dec Qtr 10	9 337	4 272	5 124	1 837	4 187	450	1 084	209	26 500
<b>Females in full-time custody</b>									
Dec Qtr 09	777	314	419	124	383	42	46	13	2 118
Sep Qtr 10	754	318	432	127	397	32	48	12	2 120
Dec Qtr 10	743	309	407	125	375	32	47	13	2 053
<b>Persons in full-time custody</b>									
Dec Qtr 09	10 304	4 507	5 537	1 944	4 781	498	1 074	177	28 822
Sep Qtr 10	10 213	4 578	5 590	1 968	4 691	491	1 100	212	28 843
Dec Qtr 10	10 080	4 581	5 531	1 962	4 562	483	1 132	222	28 553
<b>Aboriginal &amp; Torres Strait Islander persons in full-time custody</b>									
Dec Qtr 09	2 256	273	1 568	450	1 949	63	874	24	7 457
Sep Qtr 10	2 244	279	1 670	460	1 818	69	893	35	7 467
Dec Qtr 10	2 200	288	1 649	475	1 749	71	944	37	7 413
AVERAGE NUMBER ON FIRST DAY OF MONTH									
<b>Unsentenced persons in full-time custody</b>									
Dec Qtr 09	2 596	891	1 139	660	727	99	239	72	6 423
Sep Qtr 10	2 591	812	1 160	676	765	108	245	79	6 437
Dec Qtr 10	2 524	828	1 164	662	752	93	254	81	6 357
<b>Sentenced persons in full-time custody</b>									
Dec Qtr 09	7 752	3 613	4 393	1 304	4 045	408	828	103	22 447
Sep Qtr 10	7 645	3 755	4 441	1 308	3 969	383	852	134	22 487
Dec Qtr 10	7 577	3 780	4 391	1 311	3 820	398	885	137	22 299
<b>Persons in full-time custody</b>									
Dec Qtr 09	10 348	4 504	5 532	1 964	4 772	506	1 067	176	28 870
Sep Qtr 10	10 235	4 567	5 601	1 984	4 734	491	1 097	213	28 924
Dec Qtr 10	10 100	4 608	5 555	1 973	4 572	491	1 139	218	28 656
<b>Males in community-based corrections<sup>(b)</sup></b>									
Dec Qtr 09	15 110	7 360	11 935	4 805	4 262	1 080	945	1 178	46 675
Sep Qtr 10	13 924	7 751	12 535	4 638	3 812	1 215	1 020	1 233	46 127
Dec Qtr 10	13 590	7 832	12 520	4 597	3 636	1 329	926	1 213	45 644
<b>Females in community-based corrections<sup>(b)</sup></b>									
Dec Qtr 09	2 850	1 609	3 087	1 127	1 226	275	140	232	10 548
Sep Qtr 10	2 566	1 683	3 179	1 091	1 154	295	156	230	10 354
Dec Qtr 10	2 489	1 685	3 146	1 092	1 094	331	145	216	10 198
<b>Persons in community-based corrections<sup>(b)(c)</sup></b>									
Dec Qtr 09	18 032	8 969	15 023	5 934	5 488	1 355	1 085	1 410	57 295
Sep Qtr 10	16 549	9 438	15 714	5 731	4 966	1 509	1 176	1 463	56 546
Dec Qtr 10	16 127	9 521	15 665	5 691	4 730	1 660	1 072	1 430	55 895

(a) For the calculation of quarterly figures – see Explanatory Notes, paragraph 5.

(b) Figures include persons with breached or suspended orders, with the exception of Vic. and Tas.

(c) Includes persons whose sex is unknown.

PERSONS IN CORRECTIVE SERVICES, Summary(a) *continued*

	NSW	Vic.	Qld	SA	WA	Tas.	NT	ACT	Aust.
PERCENTAGE CHANGE (AVERAGE DAILY NUMBER)									
<b>Males in full-time custody</b>									
Dec Qtr 09 to Dec Qtr 10	-2.0	1.9	0.1	0.9	-4.8	-1.3	5.4	27.4	-0.8
Sep Qtr 10 to Dec Qtr 10	-1.3	0.3	-0.7	-0.2	-2.5	-2.0	3.0	4.5	-0.8
<b>Females in full-time custody</b>									
Dec Qtr 09 to Dec Qtr 10	-4.4	-1.6	-2.9	0.8	-2.1	-23.8	2.2	—	-3.1
Sep Qtr 10 to Dec Qtr 10	-1.5	-2.8	-5.8	-1.6	-5.5	—	-2.1	8.3	-3.2
<b>Persons in full-time custody</b>									
Dec Qtr 09 to Dec Qtr 10	-2.2	1.6	-0.1	0.9	-4.6	-3.0	5.4	25.4	-0.9
Sep Qtr 10 to Dec Qtr 10	-1.3	0.1	-1.1	-0.3	-2.7	-1.6	2.9	4.7	-1.0
<b>Aboriginal &amp; Torres Strait Islander persons in full-time custody</b>									
Dec Qtr 09 to Dec Qtr 10	-2.5	5.5	5.2	5.6	-10.3	12.7	8.0	54.2	-0.6
Sep Qtr 10 to Dec Qtr 10	-2.0	3.2	-1.3	3.3	-3.8	2.9	5.7	5.7	-0.7
PERCENTAGE CHANGE (AVERAGE NUMBER ON FIRST DAY OF MONTH)									
<b>Unsentenced persons in full-time custody</b>									
Dec Qtr 09 to Dec Qtr 10	-2.8	-7.1	2.2	0.3	3.4	-6.1	6.3	12.5	-1.0
Sep Qtr 10 to Dec Qtr 10	-2.6	2.0	0.3	-2.1	-1.7	-13.9	3.7	2.5	-1.2
<b>Sentenced persons in full-time custody</b>									
Dec Qtr 09 to Dec Qtr 10	-2.3	4.6	—	0.5	-5.6	-2.5	6.9	33.0	-0.7
Sep Qtr 10 to Dec Qtr 10	-0.9	0.7	-1.1	0.2	-3.8	3.9	3.9	2.2	-0.8
<b>Persons in full-time custody</b>									
Dec Qtr 09 to Dec Qtr 10	-2.4	2.3	0.4	0.5	-4.2	-3.0	6.7	23.9	-0.7
Sep Qtr 10 to Dec Qtr 10	-1.3	0.9	-0.8	-0.6	-3.4	—	3.8	2.3	-0.9
<b>Males in community-based corrections<sup>(b)</sup></b>									
Dec Qtr 09 to Dec Qtr 10	-10.1	6.4	4.9	-4.3	-14.7	23.1	-2.0	3.0	-2.2
Sep Qtr 10 to Dec Qtr 10	-2.4	1.0	-0.1	-0.9	-4.6	9.4	-9.2	-1.6	-1.0
<b>Females in community-based corrections<sup>(b)</sup></b>									
Dec Qtr 09 to Dec Qtr 10	-12.7	4.7	1.9	-3.1	-10.8	20.4	3.6	-6.9	-3.3
Sep Qtr 10 to Dec Qtr 10	-3.0	0.1	-1.0	0.1	-5.2	12.2	-7.1	-6.1	-1.5
<b>Persons in community-based corrections<sup>(b)(c)</sup></b>									
Dec Qtr 09 to Dec Qtr 10	-10.6	6.2	4.3	-4.1	-13.8	22.5	-1.2	1.4	-2.4
Sep Qtr 10 to Dec Qtr 10	-2.6	0.9	-0.3	-0.7	-4.8	10.0	-8.8	-2.3	-1.2

— nil or rounded to zero (including null cells)

(a) For the calculation of quarterly figures – see Explanatory Notes, paragraph 5.

(b) Figures include persons with breached or suspended orders, with the exception of Vic. and Tas.

(c) Includes persons whose sex is unknown.

## PERSONS IN FULL-TIME CUSTODY

	NSW(a)	Vic.	Qld	SA	WA	Tas.	NT	ACT(b)	Aust.(c)
AVERAGE DAILY NUMBER									
<b>2008</b>	9 804	4 240	5 549	1 908	3 824	526	939	179	26 885
<b>2009</b>	10 310	4 367	5 622	1 951	4 402	513	1 073	170	28 390
<b>2010</b>	10 255	4 553	5 624	1 961	4 734	480	1 113	212	28 932
<b>2009</b>									
Dec Qtr	10 304	4 507	5 537	1 944	4 781	498	1 074	177	28 822
<b>2010</b>									
Mar Qtr	10 312	4 504	5 655	1 949	4 855	471	1 109	194	29 049
Jun Qtr	10 417	4 549	5 723	1 963	4 832	476	1 109	220	29 289
Sep Qtr	10 213	4 578	5 590	1 968	4 691	491	1 100	212	28 843
Dec Qtr	10 080	4 581	5 531	1 962	4 562	483	1 132	222	28 553
<b>2009</b>									
Oct	10 366	4 478	5 492	1 947	4 738	515	1 051	169	28 757
Nov	10 340	4 528	5 574	1 962	4 807	506	1 088	181	28 986
Dec	10 207	4 516	5 545	1 925	4 799	473	1 083	181	28 728
<b>2010</b>									
Jan	10 255	4 457	5 563	1 946	4 820	451	1 120	182	28 793
Feb	10 325	4 496	5 644	1 944	4 866	481	1 108	198	29 062
Mar	10 357	4 558	5 758	1 956	4 879	483	1 100	203	29 294
Apr	10 442	4 571	5 758	1 966	4 864	472	1 114	219	29 406
May	10 428	4 548	5 738	1 964	4 834	479	1 108	221	29 320
Jun	10 382	4 527	5 671	1 960	4 798	477	1 105	220	29 140
Jul	10 278	4 554	5 595	1 966	4 724	492	1 088	211	28 907
Aug	10 197	4 573	5 585	1 967	4 708	487	1 093	212	28 822
Sep	10 163	4 609	5 589	1 972	4 639	495	1 120	213	28 800
Oct	10 125	4 605	5 555	1 955	4 560	485	1 152	214	28 652
Nov	10 130	4 590	5 545	1 965	4 584	490	1 117	227	28 648
Dec	9 988	4 547	5 493	1 966	4 543	473	1 125	225	28 361

- (a) Data prior to the September quarter 2009 includes ACT prisoners held in NSW prisons. From the September quarter 2009 ACT prisoners are no longer held in NSW prisons – see Explanatory Notes, paragraph 36.
- (b) Data prior to the September quarter 2009 includes ACT prisoners held in ACT as well as ACT prisoners that were held in NSW – see Explanatory Notes, paragraph 36.
- (c) For the period prior to the September quarter 2009, ACT Prisoners held in NSW prisons are included in both NSW and ACT figures. The sum of the state/territory columns will therefore be greater than the Australian total – see Explanatory Notes, paragraph 36.

## IMPRISONMENT RATES (a)

	NSW(b)	Vic.	Qld	SA	WA	Tas.	NT	ACT(c)	Aust.
RATE PER 100,000 ADULT POPULATION									
<b>2008</b>	182.6	104.4	169.9	153.5	234.9	138.9	601.6	67.5	164.7
<b>2009</b>	189.4	104.8	167.2	154.7	260.7	134.2	670.3	62.7	169.7
<b>2010</b>	184.2	106.3	162.4	153.0	271.8	123.9	673.2	76.5	168.5
<b>2009</b>									
Dec Qtr	188.2	107.1	163.0	153.4	280.1	129.5	662.3	64.9	170.8
<b>2010</b>									
Mar Qtr	186.5	106.0	164.6	152.9	281.1	122.1	676.4	70.7	170.5
Jun Qtr	187.5	106.5	165.7	153.5	278.3	123.0	672.9	79.7	171.1
Sep Qtr	182.9	106.5	160.9	153.2	268.2	126.5	664.5	76.2	167.5
Dec Qtr	180.0	106.1	158.4	152.3	259.6	124.1	679.1	79.5	165.1
<b>2009</b>									
Oct	189.4	106.4	161.6	153.6	277.6	134.0	648.1	61.9	170.4
Nov	188.9	107.6	164.1	154.7	281.6	131.6	670.9	66.5	171.8
Dec	186.5	107.3	163.2	151.8	281.2	123.0	668.1	66.2	170.3
<b>2010</b>									
Jan	185.4	104.8	161.9	152.7	279.2	116.8	682.8	66.2	169.0
Feb	186.7	105.8	164.3	152.5	281.8	124.6	675.7	71.9	170.5
Mar	187.3	107.2	167.6	153.5	282.5	125.1	670.7	74.0	171.9
Apr	188.0	107.0	166.7	153.7	280.2	121.9	676.1	79.3	171.7
May	187.7	106.5	166.2	153.6	278.5	123.7	672.1	80.0	171.2
Jun	186.9	106.0	164.2	153.3	276.4	123.3	670.6	79.8	170.2
Jul	184.0	105.9	161.0	153.0	270.1	126.6	657.0	75.9	167.8
Aug	182.6	106.4	160.7	153.1	269.2	125.4	660.2	76.3	167.3
Sep	182.0	107.2	160.8	153.5	265.2	127.6	676.6	76.5	167.2
Oct	180.7	106.7	159.1	151.8	259.5	124.7	691.5	76.7	165.7
Nov	180.8	106.3	158.9	152.5	260.9	125.9	670.2	81.1	165.7
Dec	178.3	105.3	157.3	152.6	258.5	121.6	675.3	80.7	164.0

(a) Imprisonment rates are based on Estimated Resident Population counts – see Explanatory Notes, paragraphs 17–21.

(b) Excludes ACT prisoners that were held in NSW prisons prior to September quarter 2009 – see Explanatory Notes, paragraph 36.

(c) Includes ACT prisoners held in ACT as well as ACT prisoners that were held in NSW prior to the September quarter 2009 – see Explanatory Notes, paragraph 36.

## PERSONS IN FULL-TIME CUSTODY, By sex

	NSW(a)	Vic.	Q/d	SA	WA	Tas.	NT	ACT(b)	Aust.(c)
MALES (AVERAGE DAILY NUMBER)									
<b>2008</b>	9 078	3 997	5 122	1 782	3 538	489	895	163	24 986
<b>2009</b>	9 537	4 081	5 199	1 823	4 055	475	1 026	155	26 336
<b>2010</b>	9 491	4 238	5 194	1 835	4 342	446	1 064	197	26 807
<b>2009</b>									
Dec Qtr	9 528	4 193	5 118	1 821	4 398	456	1 028	164	26 704
<b>2010</b>									
Mar Qtr	9 539	4 186	5 223	1 822	4 463	438	1 058	181	26 909
Jun Qtr	9 630	4 232	5 271	1 841	4 428	437	1 061	200	27 101
Sep Qtr	9 459	4 260	5 158	1 841	4 294	459	1 052	200	26 723
Dec Qtr	9 337	4 272	5 124	1 837	4 187	450	1 084	209	26 500
Oct	9 368	4 292	5 147	1 828	4 188	450	1 104	202	26 578
Nov	9 381	4 282	5 141	1 837	4 205	456	1 072	211	26 585
Dec	9 264	4 240	5 086	1 845	4 168	445	1 078	213	26 339
FEMALES (AVERAGE DAILY NUMBER)									
<b>2008</b>	726	243	427	126	286	37	44	15	1 899
<b>2009</b>	773	286	423	128	346	38	47	14	2 054
<b>2010</b>	764	315	431	125	392	34	49	15	2 125
<b>2009</b>									
Dec Qtr	777	314	419	124	383	42	46	13	2 118
<b>2010</b>									
Mar Qtr	772	318	433	127	392	34	51	14	2 140
Jun Qtr	787	317	451	122	404	39	48	20	2 188
Sep Qtr	754	318	432	127	397	32	48	12	2 120
Dec Qtr	743	309	407	125	375	32	47	13	2 053
Oct	757	313	408	127	372	35	49	12	2 074
Nov	749	308	405	128	379	33	45	16	2 063
Dec	725	306	407	121	375	28	48	12	2 022
PERSONS (AVERAGE DAILY NUMBER)									
<b>2008</b>	9 804	4 240	5 549	1 908	3 824	526	939	179	26 885
<b>2009</b>	10 310	4 367	5 622	1 951	4 402	513	1 073	170	28 390
<b>2010</b>	10 255	4 553	5 624	1 961	4 734	480	1 113	212	28 932
<b>2009</b>									
Dec Qtr	10 304	4 507	5 537	1 944	4 781	498	1 074	177	28 822
<b>2010</b>									
Mar Qtr	10 312	4 504	5 655	1 949	4 855	471	1 109	194	29 049
Jun Qtr	10 417	4 549	5 723	1 963	4 832	476	1 109	220	29 289
Sep Qtr	10 213	4 578	5 590	1 968	4 691	491	1 100	212	28 843
Dec Qtr	10 080	4 581	5 531	1 962	4 562	483	1 132	222	28 553
Oct	10 125	4 605	5 555	1 955	4 560	485	1 152	214	28 652
Nov	10 130	4 590	5 545	1 965	4 584	490	1 117	227	28 648
Dec	9 988	4 547	5 493	1 966	4 543	473	1 125	225	28 361

- (a) Data prior to the September quarter 2009 includes ACT prisoners held in NSW prisons. The ACT in NSW figures are a subset of the NSW figures and are not separately counted in the Australian totals. From the September quarter 2009, ACT prisoners are no longer held in NSW prisons – see Explanatory Notes, paragraph 36.
- (b) Data prior to the September quarter 2009 includes ACT prisoners held in ACT as well as ACT prisoners that were held in NSW – see Explanatory Notes, paragraph 36.
- (c) For the period prior to the September quarter 2009, ACT Prisoners held in NSW prisons are included in both NSW and ACT figures. The sum of the state/territory columns will therefore be greater than the Australian total – see Explanatory Notes, paragraph 36.

## IMPRISONMENT RATES(a), By sex

	NSW(b)	Vic.	Qld	SA	WA	Tas.	NT	ACT(c)	Aust.
MALES (RATE PER 100,000 ADULT POPULATION)									
<b>2008</b>	345.0	201.0	316.6	293.2	432.4	265.3	1 097.6	125.5	310.9
<b>2009</b>	357.3	199.7	311.7	295.7	476.2	255.1	1 232.0	116.5	319.3
<b>2010</b>	347.2	201.3	302.5	292.6	494.2	236.4	1 239.4	144.3	316.4
<b>2009</b>									
Dec Qtr	354.9	203.1	303.7	293.5	510.2	243.5	1 218.3	122.1	320.9
<b>2010</b>									
Mar Qtr	351.4	200.5	306.7	292.0	512.5	232.8	1 242.6	133.2	320.0
Jun Qtr	353.1	201.7	308.0	294.1	505.8	232.0	1 239.9	147.0	320.8
Sep Qtr	345.0	201.7	299.4	292.8	486.8	242.8	1 223.4	145.6	314.4
Dec Qtr	339.5	201.5	296.1	291.2	472.2	237.7	1 251.7	151.3	310.6
Oct	340.6	202.4	297.4	289.9	472.3	237.4	1 274.0	146.4	311.5
Nov	341.1	202.0	297.0	291.3	474.2	240.9	1 236.8	153.0	311.6
Dec	336.8	200.0	293.9	292.6	470.1	234.7	1 243.8	154.6	308.7
FEMALES (RATE PER 100,000 ADULT POPULATION)									
<b>2008</b>	26.5	11.7	25.9	19.8	35.3	19.1	59.5	11.4	22.9
<b>2009</b>	27.9	13.4	24.9	19.8	41.4	19.4	61.7	10.6	24.2
<b>2010</b>	27.0	14.5	24.7	19.2	45.4	17.2	61.1	10.5	24.4
<b>2009</b>									
Dec Qtr	27.8	14.7	24.5	19.1	45.4	21.4	58.8	9.1	24.8
<b>2010</b>									
Mar Qtr	27.4	14.7	25.0	19.5	45.8	17.0	64.9	9.8	24.8
Jun Qtr	27.8	14.6	25.9	18.7	46.9	19.4	60.5	14.2	25.2
Sep Qtr	26.5	14.5	24.7	19.4	45.8	16.2	60.3	8.6	24.3
Dec Qtr	26.1	14.1	23.1	19.1	43.1	16.3	58.9	9.4	23.4
Oct	26.5	14.3	23.2	19.3	42.8	17.8	60.6	8.8	23.7
Nov	26.3	14.0	23.0	19.5	43.5	16.7	56.5	11.0	23.6
Dec	25.4	13.9	23.1	18.4	43.1	14.3	59.5	8.5	23.1
PERSONS (RATE PER 100,000 ADULT POPULATION)									
<b>2008</b>	182.6	104.4	169.9	153.5	234.9	138.9	601.6	67.5	164.7
<b>2009</b>	189.4	104.8	167.2	154.7	260.7	134.2	670.3	62.7	169.7
<b>2010</b>	184.2	106.3	162.4	153.0	271.8	123.9	673.2	76.5	168.5
<b>2009</b>									
Dec Qtr	188.2	107.1	163.0	153.4	280.1	129.5	662.3	64.9	170.8
<b>2010</b>									
Mar Qtr	186.5	106.0	164.6	152.9	281.1	122.1	676.4	70.7	170.5
Jun Qtr	187.5	106.5	165.7	153.5	278.3	123.0	672.9	79.7	171.1
Sep Qtr	182.9	106.5	160.9	153.2	268.2	126.5	664.5	76.2	167.5
Dec Qtr	180.0	106.1	158.4	152.3	259.6	124.1	679.1	79.5	165.1
Oct	180.7	106.7	159.1	151.8	259.5	124.7	691.5	76.7	165.7
Nov	180.8	106.3	158.9	152.5	260.9	125.9	670.2	81.1	165.7
Dec	178.3	105.3	157.3	152.6	258.5	121.6	675.3	80.7	164.0

(a) Imprisonment rates are based on Estimated Resident Population counts – see Explanatory Notes, paragraphs 17–21.

(b) Excludes ACT prisoners that were held in NSW prisons prior to September quarter 2009 – see Explanatory Notes, paragraph 36.

(c) Includes ACT prisoners held in ACT as well as ACT prisoners that were held in NSW prior to the September quarter 2009 – see Explanatory Notes, paragraph 36.

## PERSONS IN FULL-TIME CUSTODY, By type of custody

	NSW(a)(b)	Vic.	Qld	SA	WA(c)	Tas.	NT	ACT(d)	Aust. (e)(f)
PERSONS IN SECURE CUSTODY (AVERAGE DAILY NUMBER)									
<b>2008</b>	6 229	3 797	4 952	1 703	2 794	468	663	120	20 701
<b>2009</b>	6 734	3 911	4 977	1 736	3 344	460	750	157	22 064
<b>2010</b>	6 596	4 063	5 039	1 761	3 427	432	771	136	22 224
<b>2009</b>									
Dec Qtr	6 743	4 028	4 837	1 736	3 858	446	756	177	22 581
<b>2010</b>									
Mar Qtr	6 720	4 039	5 003	1 752	3 879	419	774	194	22 780
Jun Qtr	6 717	4 072	5 113	1 760	3 876	429	778	220	22 965
Sep Qtr	6 510	4 083	5 030	1 766	3 746	444	764	212	22 557
Dec Qtr	6 442	4 059	5 011	1 764	3 593	434	767	222	22 292
Oct	6 436	4 081	5 037	1 759	3 594	438	776	214	22 335
Nov	6 475	4 065	5 028	1 770	3 611	444	753	227	22 372
Dec	6 416	4 030	4 967	1 763	3 576	422	772	225	22 170
PERSONS IN OPEN CUSTODY (AVERAGE DAILY NUMBER)									
<b>2008</b>	3 575	443	597	205	1 030	58	276	59	6 184
<b>2009</b>	3 576	456	645	214	1 061	54	323	13	6 329
<b>2010</b>	3 658	490	585	200	1 307	49	342	77	6 708
<b>2009</b>									
Dec Qtr	3 562	479	700	208	923	52	318	..	6 242
<b>2010</b>									
Mar Qtr	3 591	465	652	196	976	52	336	..	6 268
Jun Qtr	3 700	477	610	203	956	47	331	..	6 324
Sep Qtr	3 703	495	559	202	945	47	336	..	6 287
Dec Qtr	3 639	522	520	198	969	48	365	..	6 261
Oct	3 689	524	518	196	966	47	377	..	6 317
Nov	3 655	525	517	195	973	46	364	..	6 276
Dec	3 573	517	525	203	968	51	353	..	6 190
PERSONS IN CUSTODY (AVERAGE DAILY NUMBER)									
<b>2008</b>	9 804	4 240	5 549	1 908	3 824	526	939	179	26 885
<b>2009</b>	10 310	4 367	5 622	1 951	4 402	513	1 073	170	28 390
<b>2010</b>	10 255	4 553	5 624	1 961	4 734	480	1 113	212	28 932
<b>2009</b>									
Dec Qtr	10 304	4 507	5 537	1 944	4 781	498	1 074	177	28 822
<b>2010</b>									
Mar Qtr	10 312	4 504	5 655	1 949	4 855	471	1 109	194	29 049
Jun Qtr	10 417	4 549	5 723	1 963	4 832	476	1 109	220	29 289
Sep Qtr	10 213	4 578	5 590	1 968	4 691	491	1 100	212	28 843
Dec Qtr	10 080	4 581	5 531	1 962	4 562	483	1 132	222	28 553
Oct	10 125	4 605	5 555	1 955	4 560	485	1 152	214	28 652
Nov	10 130	4 590	5 545	1 965	4 584	490	1 117	227	28 648
Dec	9 988	4 547	5 493	1 966	4 543	473	1 125	225	28 361
..	not applicable								
(a)	For the period prior to the September quarter 2009, ACT prisoners held in NSW prisons are included in both NSW and ACT figures. The sum of the state/territory columns will therefore be greater than the Australian total – see Explanatory Notes, paragraph 36.								
(b)	The classification of some NSW correctional facilities changed from March 2008 – see Explanatory Notes, paragraph 29.								
(c)	Data for the period prior to September quarter 2009 are not comparable – see Explanatory Notes, paragraphs 31.								
(d)	Data prior to the September quarter 2009 includes ACT prisoners held in ACT as well as ACT prisoners that were held in NSW – see Explanatory Notes, paragraph 36.								
(e)	See footnotes b–c								
(f)	For the period prior to the September quarter 2009, ACT prisoners held in NSW prisons are included in both NSW and ACT figures. The sum of the state/territory columns will therefore be greater than the Australian total – see Explanatory Notes, paragraph 36.								

## IMPRISONMENT RATES(a), By type of custody

	NSW(b)(c)	Vic.	Qld	SA	WA(d)	Tas.	NT	ACT(d)(e)	Aust.(f)
PERSONS IN SECURE CUSTODY (RATE PER 100,000 ADULT POPULATION)									
<b>2008</b>	116.5	93.5	151.6	137.0	171.6	123.7	424.8	45.2	126.8
<b>2009</b>	123.8	93.8	148.0	137.7	198.2	120.1	468.3	57.9	131.9
<b>2010</b>	118.5	94.8	145.5	137.4	196.6	111.4	466.4	48.8	129.4
<b>2009</b>									
Dec Qtr	123.2	95.7	142.4	136.9	226.1	116.1	466.2	64.9	133.8
<b>2010</b>									
Mar Qtr	121.5	95.0	145.6	137.5	224.7	108.5	471.8	70.7	133.7
Jun Qtr	120.9	95.3	148.1	137.6	223.3	110.9	472.0	79.7	134.1
Sep Qtr	116.6	95.0	144.8	137.5	214.2	114.4	461.5	76.2	131.0
Dec Qtr	115.0	94.0	143.5	136.9	204.5	111.7	460.3	79.5	128.9
Oct	114.9	94.5	144.3	136.5	204.5	112.6	465.5	76.7	129.2
Nov	115.6	94.2	144.0	137.4	205.5	114.1	451.8	81.1	129.4
Dec	114.5	93.4	142.3	136.9	203.4	108.4	463.3	80.7	128.2

	NSW(b)(c)	Vic.	Qld	SA	WA(d)	Tas.	NT	ACT(d)(e)	Aust.(f)
PERSONS IN OPEN CUSTODY (RATE PER 100,000 ADULT POPULATION)									
<b>2008</b>	66.0	10.9	18.3	16.5	63.2	15.3	176.8	22.4	37.9
<b>2009</b>	65.6	10.9	19.2	17.0	62.9	14.0	202.0	4.9	37.8
<b>2010</b>	65.7	11.4	16.9	15.6	75.2	12.5	206.9	27.8	39.1
<b>2009</b>									
Dec Qtr	65.1	11.4	20.6	16.4	54.1	13.4	196.0	..	37.0
<b>2010</b>									
Mar Qtr	64.9	10.9	19.0	15.4	56.5	13.6	204.6	..	36.8
Jun Qtr	66.6	11.2	17.7	15.9	55.1	12.0	201.0	..	36.9
Sep Qtr	66.3	11.5	16.1	15.7	54.0	12.1	202.9	..	36.5
Dec Qtr	65.0	12.1	14.9	15.4	55.1	12.4	218.8	..	36.2
Oct	65.9	12.1	14.8	15.2	55.0	12.1	226.1	..	36.5
Nov	65.2	12.2	14.8	15.1	55.4	11.8	218.4	..	36.3
Dec	63.8	12.0	15.1	15.8	55.1	13.2	212.0	..	35.8

	NSW(b)(c)	Vic.	Qld	SA	WA(d)	Tas.	NT	ACT(d)(e)	Aust.(f)
PERSONS IN CUSTODY (RATE PER 100,000 ADULT POPULATION)									
<b>2008</b>	182.6	104.4	169.9	153.5	234.9	138.9	601.6	67.5	164.7
<b>2009</b>	189.4	104.8	167.2	154.7	260.7	134.2	670.3	62.7	169.7
<b>2010</b>	184.2	106.3	162.4	153.0	271.8	123.9	673.2	76.5	168.5
<b>2009</b>									
Dec Qtr	188.2	107.1	163.0	153.4	280.1	129.5	662.3	64.9	170.8
<b>2010</b>									
Mar Qtr	186.5	106.0	164.6	152.9	281.1	122.1	676.4	70.7	170.5
Jun Qtr	187.5	106.5	165.7	153.5	278.3	123.0	672.9	79.7	171.1
Sep Qtr	182.9	106.5	160.9	153.2	268.2	126.5	664.5	76.2	167.5
Dec Qtr	180.0	106.1	158.4	152.3	259.6	124.1	679.1	79.5	165.1
Oct	180.7	106.7	159.1	151.8	259.5	124.7	691.5	76.7	165.7
Nov	180.8	106.3	158.9	152.5	260.9	125.9	670.2	81.1	165.7
Dec	178.3	105.3	157.3	152.6	258.5	121.6	675.3	80.7	164.0

.. not applicable

- (a) Imprisonment rates are based on Estimated Resident Population counts – see Explanatory Notes, paragraphs 17–21.  
 (b) Excludes ACT prisoners that were held in NSW prisons prior to September quarter 2009 – see Explanatory Notes, paragraph 36.

- (c) The classification of some NSW correctional facilities changed from March 2008 – see Explanatory Notes, paragraph 29.  
 (d) Data prior to the September quarter 2009 are not comparable – see Explanatory Notes, paragraphs 31.  
 (e) Includes ACT prisoners held in ACT as well as ACT prisoners that were held in NSW prior to the September quarter 2009 – see Explanatory Notes, paragraph 36.  
 (f) See footnotes c–d.



## PERSONS IN FULL-TIME CUSTODY(a), By legal status

	NSW(b)	Vic.	Qld	SA	WA	Tas.	NT	ACT(c)	Aust.(d)
UNSENTENCED (NUMBER ON FIRST DAY OF MONTH)									
<b>2008</b>	2 545	836	1 223	650	752	112	213	92	6 423
<b>2009</b>	2 686	856	1 152	671	718	110	258	79	6 529
<b>2010</b>	2 657	834	1 186	678	770	98	249	85	6 557
<b>2009</b>									
Dec Qtr	2 596	891	1 139	660	727	99	239	72	6 423
<b>2010</b>									
Mar Qtr	2 737	836	1 204	658	736	92	259	87	6 609
Jun Qtr	2 778	861	1 215	715	829	99	238	92	6 826
Sep Qtr	2 591	812	1 160	676	765	108	245	79	6 437
Dec Qtr	2 524	828	1 164	662	752	93	254	81	6 357
SENTENCED (NUMBER ON FIRST DAY OF MONTH)									
<b>2008</b>	7 264	3 396	4 306	1 271	3 060	413	719	82	20 429
<b>2009</b>	7 620	3 499	4 452	1 294	3 647	404	814	88	21 800
<b>2010</b>	7 604	3 719	4 439	1 288	3 973	380	862	126	22 391
<b>2009</b>									
Dec Qtr	7 752	3 613	4 393	1 304	4 045	408	828	103	22 447
<b>2010</b>									
Mar Qtr	7 547	3 640	4 391	1 267	4 092	359	839	108	22 243
Jun Qtr	7 648	3 700	4 534	1 264	4 010	378	875	124	22 535
Sep Qtr	7 645	3 755	4 441	1 308	3 969	383	852	134	22 487
Dec Qtr	7 577	3 780	4 391	1 311	3 820	398	885	137	22 299
TOTAL (NUMBER ON FIRST DAY OF MONTH)									
<b>2008</b>	9 809	4 233	5 529	1 921	3 812	525	931	174	26 852
<b>2009</b>	10 306	4 355	5 604	1 964	4 365	514	1 072	167	28 329
<b>2010</b>	10 261	4 553	5 625	1 966	4 743	478	1 112	211	28 948
<b>2009</b>									
Dec Qtr	10 348	4 504	5 532	1 964	4 772	506	1 067	176	28 870
<b>2010</b>									
Mar Qtr	10 284	4 476	5 594	1 926	4 828	451	1 098	195	28 852
Jun Qtr	10 426	4 561	5 749	1 980	4 839	477	1 113	216	29 361
Sep Qtr	10 235	4 567	5 601	1 984	4 734	491	1 097	213	28 924
Dec Qtr	10 100	4 608	5 555	1 973	4 572	491	1 139	218	28 656
Oct	10 138	4 616	5 580	1 972	4 588	488	1 157	209	28 748
Nov	10 106	4 608	5 497	1 945	4 560	493	1 139	222	28 570
Dec	10 057	4 600	5 587	2 002	4 567	492	1 121	223	28 649

- (a) Figures for the quarter and year for first day of month counts are calculated as a simple average – see Explanatory Notes, paragraph 5.
- (b) Data prior to the September quarter 2009 includes ACT prisoners held in NSW prisons. From the September quarter 2009 ACT prisoners are no longer held in NSW prisons – see Explanatory Notes, paragraph 36.
- (c) Data prior to the September quarter 2009 includes ACT prisoners held in ACT as well as ACT prisoners that were held in NSW – see Explanatory Notes, paragraph 36.
- (d) For the period prior to the September quarter 2009, ACT Prisoners held in NSW prisons are included in both NSW and ACT figures. The sum of the state/territory columns will therefore be greater than the Australian total – see Explanatory Notes, paragraph 36.

## IMPRISONMENT RATES(a), By legal status

	NSW(b)	Vic.	Qld	SA	WA	Tas.	NT	ACT(c)(d)	Aust.
UNSENTENCED (RATE PER 100,000 ADULT POPULATION)									
<b>2008</b>	47.8	20.6	37.5	52.3	46.2	29.5	136.2	34.7	39.4
<b>2009</b>	49.4	20.5	34.3	53.2	42.5	28.8	160.9	29.1	39.0
<b>2010</b>	47.7	19.5	34.2	52.9	44.2	25.3	150.9	30.6	38.2
<b>2009</b>									
Dec Qtr	47.4	21.2	33.5	52.1	42.6	25.7	147.6	26.5	38.1
<b>2010</b>									
Mar Qtr	49.5	19.7	35.0	51.6	42.6	23.8	158.1	31.6	38.8
Jun Qtr	50.0	20.2	35.2	55.9	47.7	25.5	144.6	33.3	39.9
Sep Qtr	46.4	18.9	33.4	52.6	43.8	27.9	148.2	28.5	37.4
Dec Qtr	45.1	19.2	33.3	51.4	42.8	23.9	152.6	28.9	36.8
SENTENCED (RATE PER 100,000 ADULT POPULATION)									
<b>2008</b>	134.9	83.6	131.9	102.2	187.9	109.1	460.6	31.1	125.2
<b>2009</b>	139.9	84.0	132.4	102.6	216.0	105.5	508.6	32.4	130.3
<b>2010</b>	136.6	86.8	128.2	100.5	228.1	98.0	521.8	45.4	130.4
<b>2009</b>									
Dec Qtr	141.6	85.9	129.3	102.9	237.0	106.1	510.8	37.9	133.0
<b>2010</b>									
Mar Qtr	136.5	85.6	127.8	99.4	237.0	93.1	511.3	39.2	130.5
Jun Qtr	137.7	86.6	131.3	98.9	231.0	97.8	530.6	45.1	131.6
Sep Qtr	136.9	87.3	127.8	101.8	226.9	98.6	514.4	48.2	130.5
Dec Qtr	135.3	87.6	125.8	101.8	217.3	102.3	530.9	49.2	129.0
TOTAL (RATE PER 100,000 ADULT POPULATION)									
<b>2008</b>	182.7	104.2	169.3	154.6	234.1	138.6	596.8	65.8	164.5
<b>2009</b>	189.3	104.5	166.6	155.8	258.5	134.3	669.5	61.6	169.4
<b>2010</b>	184.3	106.3	162.4	153.4	272.3	123.3	672.7	76.0	168.6
<b>2009</b>									
Dec Qtr	189.0	107.1	162.8	154.9	279.6	131.8	658.4	64.4	171.1
<b>2010</b>									
Mar Qtr	186.0	105.3	162.9	151.1	279.6	117.0	669.4	70.8	169.3
Jun Qtr	187.7	106.8	166.5	154.8	278.7	123.3	675.2	78.4	171.5
Sep Qtr	183.3	106.2	161.2	154.5	270.7	126.5	662.6	76.7	167.9
Dec Qtr	180.3	106.7	159.1	153.2	260.1	126.2	683.6	78.1	165.7
Oct	181.0	106.9	159.8	153.1	261.1	125.5	694.4	74.8	166.3
Nov	180.4	106.7	157.5	151.0	259.5	126.7	683.6	79.5	165.2
Dec	179.5	106.6	160.0	155.4	259.9	126.5	672.8	79.9	165.7

(a) Imprisonment rates are based on Estimated Resident Population counts – see Explanatory Notes, paragraphs 17–21.

(b) Excludes ACT prisoners that were held in NSW prisons prior to September quarter 2009 – see Explanatory Notes, paragraph 36.

(c) Includes ACT prisoners held in ACT as well as ACT prisoners that were held in NSW prior to the September quarter 2009 – see Explanatory Notes, paragraph 36.

(d) Data prior to the June quarter 2009 mainly included unsentenced persons in ACT prison custody – see Explanatory Notes, paragraph 37.

**SENTENCED PRISONER RECEPTIONS INTO FULL-TIME CUSTODY(a)**

	NSW(b)	Vic.	Qld	SA	WA	Tas.	NT(c)	ACT(d)	Aust.(e)
NUMBER									
<b>2008</b>	9 098	3 915	8 223	1 507	4 355	747	1 442	131	29 306
<b>2009</b>	8 848	4 190	7 728	1 583	5 372	635	1 674	123	30 153
<b>2010</b>	8 175	4 230	7 711	1 613	5 551	546	2 055	182	30 063
<b>2009</b>									
Dec Qtr	2 093	1 154	1 809	427	1 295	143	524	37	7 482
<b>2010</b>									
Mar Qtr	2 016	1 026	2 040	376	1 234	152	516	27	7 387
Jun Qtr	2 000	1 085	1 914	389	1 342	121	507	69	7 427
Sep Qtr	2 156	1 108	1 925	428	1 544	140	473	46	7 820
Dec Qtr	2 003	1 011	1 832	420	1 431	133	559	40	7 429

- (a) The count of sentenced prisoner receptions is an addition of the total number for each month within the reference period – see Explanatory Notes, paragraphs 2–5.
- (b) Data prior to the September quarter 2009 includes ACT prisoners held in NSW prisons. From the September quarter 2009 ACT prisoners are no longer held in NSW prisons – see Explanatory Notes, paragraph 36.
- (c) A new processing system was introduced in September 2009 resulting in increased counts from the December Quarter 2009 – see Explanatory Notes, paragraph 35.
- (d) Data prior to the September quarter 2009 includes ACT prisoners held in ACT as well as ACT prisoners that were held in NSW – see Explanatory Notes, paragraph 36.
- (e) For the period prior to the September quarter 2009, ACT Prisoners held in NSW prisons are included in both NSW and ACT figures. The sum of the state/territory columns will therefore be greater than the Australian total – see Explanatory Notes, paragraph 36.

	NSW		ACT	
	no.(c)	rate(d)	no.(c)	rate(d)
MALES				
<b>2008</b>	653	25.0	50	38.1
<b>2009</b>	740	27.8	44	33.0
<b>2010</b>	636	23.3	47	34.6
<b>2009</b>				
Dec Qtr	797	29.7	51	38.0
<b>2010</b>				
Mar Qtr	778	28.6	47	34.9
Jun Qtr	718	26.3	46	34.1
Sep Qtr	617	22.5	46	33.7
Dec Qtr	435	15.8	49	35.6
Oct	500	18.2	47	34.1
Nov	422	15.3	47	34.1
Dec	384	14.0	53	38.6
FEMALES				
<b>2008</b>	65	2.4	6	4.4
<b>2009</b>	67	2.4	7	4.9
<b>2010</b>	53	1.9	7	4.7
<b>2009</b>				
Dec Qtr	68	2.4	5	3.9
<b>2010</b>				
Mar Qtr	65	2.3	7	5.2
Jun Qtr	58	2.1	7	5.3
Sep Qtr	51	1.8	7	5.0
Dec Qtr	39	1.4	5	3.2
Oct	44	1.5	6	4.2
Nov	40	1.4	4	2.7
Dec	35	1.2	4	2.8
PERSONS				
<b>2008</b>	718	13.5	55	20.9
<b>2009</b>	806	14.8	51	18.7
<b>2010</b>	689	12.4	54	19.4
<b>2009</b>				
Dec Qtr	865	15.8	56	20.7
<b>2010</b>				
Mar Qtr	843	15.2	55	19.9
Jun Qtr	776	14.0	54	19.5
Sep Qtr	668	12.0	53	19.2
Dec Qtr	475	8.5	54	19.2
Oct	545	9.7	53	19.0
Nov	461	8.2	51	18.2
Dec	418	7.5	57	20.5

- (a) Periodic detention is a form of custody only used in NSW and the ACT. This order type has ceased from October 2010 in New South Wales.
- (b) Imprisonment rates are based on Estimated Resident Population counts – see Explanatory Notes, paragraphs 17–21.
- (c) Average daily number.
- (d) Rate per 100,000 adult population.

	NSW	Vic.	Qld	SA	WA	Tas.	NT	ACT	Aust.
MALES (NUMBER ON FIRST DAY OF MONTH)									
<b>2008</b>	327	83	68	22	43	6	13	2	563
<b>2009</b>	351	89	80	16	51	9	12	—	608
<b>2010</b>	343	102	91	18	80	4	15	1	653
<b>2009</b>									
Dec Qtr	358	97	82	15	61	9	15	—	637
<b>2010</b>									
Mar Qtr	340	97	89	20	66	4	15	—	631
Jun Qtr	340	96	91	15	64	4	14	1	627
Sep Qtr	342	103	96	18	75	4	17	2	658
Dec Qtr	351	111	87	17	113	5	14	1	698
FEMALES (NUMBER ON FIRST DAY OF MONTH)									
<b>2008</b>	73	7	22	3	8	6	—	—	121
<b>2009</b>	68	7	20	4	12	4	2	—	117
<b>2010</b>	68	27	26	3	15	2	2	—	142
<b>2009</b>									
Dec Qtr	66	10	25	4	12	5	2	—	124
<b>2010</b>									
Mar Qtr	68	19	24	2	13	3	2	—	132
Jun Qtr	68	27	27	3	15	2	2	—	145
Sep Qtr	69	30	26	2	14	2	2	—	146
Dec Qtr	67	29	29	2	17	1	1	—	146
PERSONS (NUMBER ON FIRST DAY OF MONTH)									
<b>2008</b>	399	90	90	25	52	12	13	2	684
<b>2009</b>	420	97	100	20	62	12	14	—	726
<b>2010</b>	411	128	117	20	94	7	17	1	795
<b>2009</b>									
Dec Qtr	424	106	107	19	74	14	17	—	761
<b>2010</b>									
Mar Qtr	408	116	113	22	79	7	17	—	762
Jun Qtr	408	124	118	19	80	6	17	—	772
Sep Qtr	411	133	122	21	89	7	19	2	804
Dec Qtr	418	140	115	19	130	6	15	1	844
Oct	421	143	114	20	104	np	16	np	824
Nov	416	141	117	17	137	np	14	np	849
Dec	416	136	115	20	148	np	15	np	858

— nil or rounded to zero (including null cells)

np not available for publication but included in totals where applicable, unless otherwise indicated

- (a) Counts reflect the state or territory in which a prisoner was sentenced, not where they were held in custody.
- (b) Figures for the quarter and year for the first day of the month counts are calculated as a simple average – see Explanatory Notes, paragraph 5.

	NSW(b)	Vic.	Qld	SA	WA	Tas.	NT	ACT(c)	Aust.(d)
MALES (AVERAGE DAILY NUMBER)									
<b>2008</b>	1 852	229	1 364	383	1 444	59	736	20	6 080
<b>2009</b>	2 033	233	1 435	416	1 635	60	842	23	6 673
<b>2010</b>	2 049	257	1 527	426	1 668	62	871	33	6 892
<b>2009</b>									
Dec Qtr	2 031	249	1 441	421	1 759	56	835	23	6 815
<b>2010</b>									
Mar Qtr	2 057	255	1 528	414	1 753	60	858	30	6 955
Jun Qtr	2 091	259	1 538	424	1 712	60	867	34	6 984
Sep Qtr	2 043	255	1 533	425	1 631	63	853	33	6 835
Dec Qtr	2 004	260	1 508	440	1 579	63	905	35	6 795
Oct	2 020	262	1 525	444	1 577	65	922	33	6 847
Nov	2 027	261	1 517	439	1 597	64	887	36	6 827
Dec	1 967	258	1 484	438	1 564	60	905	37	6 712
FEMALES (AVERAGE DAILY NUMBER)									
<b>2008</b>	213	17	115	28	143	8	36	3	561
<b>2009</b>	226	19	123	31	165	7	38	3	612
<b>2010</b>	210	26	136	34	187	7	41	2	643
<b>2009</b>									
Dec Qtr	225	24	127	29	190	7	39	1	643
<b>2010</b>									
Mar Qtr	224	26	127	34	195	6	43	3	657
Jun Qtr	219	27	139	31	197	7	41	2	663
Sep Qtr	201	24	138	35	186	6	40	2	633
Dec Qtr	196	28	141	34	170	8	40	2	618
Oct	200	26	135	35	167	9	42	1	614
Nov	195	29	139	37	174	9	37	3	624
Dec	192	28	149	31	169	7	40	2	617
PERSONS (AVERAGE DAILY NUMBER)									
<b>2008</b>	2 065	245	1 478	411	1 587	67	773	23	6 641
<b>2009</b>	2 259	252	1 557	447	1 800	66	880	25	7 285
<b>2010</b>	2 258	284	1 663	460	1 855	68	912	35	7 534
<b>2009</b>									
Dec Qtr	2 256	273	1 568	450	1 949	63	874	24	7 457
<b>2010</b>									
Mar Qtr	2 281	281	1 654	449	1 948	66	901	32	7 613
Jun Qtr	2 310	286	1 676	455	1 909	67	908	36	7 647
Sep Qtr	2 244	279	1 670	460	1 818	69	893	35	7 467
Dec Qtr	2 200	288	1 649	475	1 749	71	944	37	7 413
Oct	2 220	288	1 660	479	1 744	74	963	34	7 462
Nov	2 222	289	1 655	476	1 772	73	924	39	7 450
Dec	2 160	286	1 633	469	1 733	66	945	39	7 330

(a) Excludes persons whose Aboriginal and Torres Strait Islander status is unknown – see Explanatory Notes, paragraph 28.

(b) For the period prior to the September quarter 2009, ACT Prisoners held in NSW prisons are included in both NSW and ACT figures. The sum of the state/territory columns will therefore be greater than the Australian total – see Explanatory Notes, paragraph 36.

(c) Data prior to the September quarter 2009 includes ACT prisoners held in ACT as well as ACT prisoners that were held in NSW – see Explanatory Notes, paragraph 36.

(d) For the period prior to the September quarter 2009, ACT Prisoners held in NSW prisons are included in both NSW and ACT figures. The sum of the state/territory columns will therefore be greater than the Australian total – see Explanatory Notes, paragraph 36.

	NSW(c)	Vic.	Qld	SA	WA	Tas.	NT	ACT(d)	Aust.
MALES (RATE PER 100,000 ADULT ABORIGINAL AND TORRES STRAIT ISLANDER POPULATION)									
<b>2008</b>	4 261.4	2 317.8	3 191.4	4 753.7	6 833.2	1 096.0	3 901.9	1 565.5	4 035.9
<b>2009</b>	4 648.1	2 337.5	3 324.5	4 954.0	7 519.9	1 072.0	4 393.7	1 676.9	4 360.2
<b>2010</b>	4 430.0	2 428.0	3 311.4	4 958.7	7 428.0	1 056.3	4 383.3	2 393.7	4 279.2
<b>2009</b>									
Dec Qtr	4 538.0	2 441.8	3 250.8	5 046.7	8 062.6	989.8	4 319.5	1 702.3	4 375.5
<b>2010</b>									
Mar Qtr	4 448.7	2 410.8	3 314.2	4 825.7	7 803.8	1 027.9	4 319.7	2 164.3	4 318.7
Jun Qtr	4 521.3	2 441.3	3 335.2	4 935.9	7 623.6	1 037.7	4 363.6	2 468.4	4 336.7
Sep Qtr	4 416.8	2 404.8	3 324.6	4 943.1	7 263.6	1 082.3	4 293.3	2 388.6	4 243.7
Dec Qtr	4 334.5	2 454.7	3 272.0	5 126.9	7 031.5	1 076.5	4 554.9	2 549.4	4 219.1
Oct	4 368.8	2 468.9	3 308.1	5 169.4	7 021.1	1 115.4	4 640.6	2 375.8	4 251.5
Nov	4 382.6	2 458.9	3 289.7	5 111.2	7 112.4	1 091.3	4 465.8	2 614.0	4 238.8
Dec	4 253.6	2 436.6	3 218.9	5 099.5	6 963.6	1 023.3	4 555.4	2 660.4	4 167.7
FEMALES (RATE PER 100,000 ADULT ABORIGINAL AND TORRES STRAIT ISLANDER POPULATION)									
<b>2008</b>	466.9	163.1	254.6	316.1	666.7	137.1	177.8	235.4	354.8
<b>2009</b>	492.1	186.9	266.2	343.5	731.4	121.2	188.3	198.2	379.1
<b>2010</b>	434.1	239.4	281.9	366.0	821.7	112.8	191.1	148.8	381.6
<b>2009</b>									
Dec Qtr	480.0	228.9	272.2	327.3	861.0	126.4	185.3	60.6	393.6
<b>2010</b>									
Mar Qtr	462.6	236.6	262.4	372.5	858.1	95.8	201.4	179.9	390.3
Jun Qtr	453.1	248.2	287.2	339.7	864.3	113.0	191.4	167.0	393.6
Sep Qtr	416.1	222.5	285.7	379.7	818.7	102.6	187.0	116.9	375.6
Dec Qtr	405.4	250.5	291.9	372.1	746.9	139.5	184.9	132.6	367.2
Oct	413.7	237.4	279.7	379.6	733.2	150.8	194.0	67.4	364.8
Nov	404.4	263.9	287.5	401.3	766.7	155.8	173.0	181.4	370.3
Dec	398.1	250.7	308.4	336.2	741.4	112.5	187.2	150.5	366.6
PERSONS (RATE PER 100,000 ADULT ABORIGINAL AND TORRES STRAIT ISLANDER POPULATION)									
<b>2008</b>	2 317.1	1 222.0	1 685.4	2 450.4	3 725.2	608.2	1 961.6	902.0	2 150.0
<b>2009</b>	2 517.7	1 244.6	1 746.1	2 561.0	4 058.0	590.2	2 227.9	933.0	2 316.4
<b>2010</b>	2 387.8	1 314.2	1 762.3	2 581.0	4 104.6	578.0	2 204.0	1 265.6	2 286.9
<b>2009</b>									
Dec Qtr	2 461.9	1 314.3	1 724.1	2 602.1	4 438.2	551.3	2 167.3	879.9	2 337.4
<b>2010</b>									
Mar Qtr	2 411.5	1 304.3	1 753.8	2 520.2	4 309.6	555.3	2 178.9	1 167.1	2 310.7
Jun Qtr	2 442.2	1 325.2	1 776.6	2 556.4	4 223.2	568.9	2 194.7	1 311.9	2 321.2
Sep Qtr	2 372.2	1 294.2	1 770.7	2 580.6	4 021.3	585.6	2 158.7	1 247.0	2 266.5
Dec Qtr	2 326.4	1 332.9	1 748.2	2 665.2	3 869.9	601.5	2 283.2	1 334.9	2 250.2
Oct	2 347.5	1 333.2	1 759.6	2 689.7	3 857.8	626.3	2 329.1	1 215.8	2 264.8
Nov	2 349.4	1 341.8	1 754.6	2 672.8	3 920.0	617.0	2 234.2	1 391.6	2 261.4
Dec	2 283.1	1 324.1	1 730.6	2 633.5	3 833.4	561.6	2 284.7	1 399.1	2 224.8

- (a) Rates are based on Aboriginal and Torres Strait Islander adult population estimates and projections for 30 June of the relevant calendar year – see Explanatory Notes, paragraphs 22–25.
- (b) Excludes persons whose Aboriginal and Torres Strait Islander status is unknown – see Explanatory Notes, paragraph 28.

- (c) Excludes ACT prisoners that were held in NSW prisons prior to September quarter 2009 – see Explanatory Notes, paragraph 36.
- (d) Includes ACT prisoners held in ACT as well as ACT prisoners held in NSW – see Explanatory Notes, paragraph 36.

	NSW(c)	Vic.	Qld	SA	WA	Tas.	NT	ACT(c)	Aust. (d)
UNSENTENCED (NUMBER ON FIRST DAY OF MONTH)									
<b>2008</b>	492	52	335	169	307	15	174	14	1 560
<b>2009</b>	537	52	299	189	297	18	210	15	1 615
<b>2010</b>	529	55	339	197	313	18	209	19	1 678
<b>2009</b>									
Dec Qtr	496	64	285	185	299	14	190	14	1 548
<b>2010</b>									
Mar Qtr	536	52	331	184	315	15	216	19	1 668
Jun Qtr	576	58	355	199	339	17	194	17	1 755
Sep Qtr	519	56	328	199	300	19	202	19	1 642
Dec Qtr	483	53	343	205	298	20	225	19	1 646
SENTENCED (NUMBER ON FIRST DAY OF MONTH)									
<b>2008</b>	1 563	192	1 140	243	1 274	53	592	9	5 056
<b>2009</b>	1 718	198	1 248	262	1 493	49	671	10	5 647
<b>2010</b>	1 744	228	1 322	265	1 549	50	701	16	5 874
<b>2009</b>									
Dec Qtr	1 778	203	1 279	270	1 646	50	682	11	5 918
<b>2010</b>									
Mar Qtr	1 740	227	1 294	260	1 626	47	679	14	5 886
Jun Qtr	1 755	228	1 335	262	1 573	51	720	19	5 943
Sep Qtr	1 741	224	1 338	264	1 539	48	680	16	5 850
Dec Qtr	1 740	234	1 320	275	1 456	53	725	17	5 819
TOTAL (NUMBER ON FIRST DAY OF MONTH)									
<b>2008</b>	2 056	244	1 475	413	1 581	67	766	23	6 616
<b>2009</b>	2 255	250	1 547	450	1 789	66	881	25	7 262
<b>2010</b>	2 273	283	1 661	462	1 862	67	910	35	7 552
<b>2009</b>									
Dec Qtr	2 274	268	1 564	455	1 946	64	871	25	7 467
<b>2010</b>									
Mar Qtr	2 276	279	1 625	444	1 941	62	895	33	7 554
Jun Qtr	2 331	286	1 691	461	1 912	68	914	36	7 698
Sep Qtr	2 260	280	1 666	463	1 839	67	882	35	7 492
Dec Qtr	2 224	287	1 663	480	1 754	73	949	35	7 465

- (a) Figures for the quarter and year for first day of the month counts are calculated as a simple average – see Explanatory Notes, paragraph 5.
- (b) Excludes persons whose Aboriginal and Torres Strait Islander status is unknown – see Explanatory Notes, paragraph 28.
- (c) Data prior to the September quarter 2009 includes ACT prisoners held in NSW prisons. From the September quarter 2009 ACT prisoners are no longer held in NSW prisons – see Explanatory Notes, paragraph 36.
- (d) For the period prior to the September quarter 2009, ACT Prisoners held in NSW prisons are included in both NSW and ACT figures. The sum of the state/territory columns will therefore be greater than the Australian total – see Explanatory Notes, paragraph 36.



	NSW(d)	Vic.	Qld	SA	WA	Tas.	NT	ACT(e)	Aust.
UNSENTENCED (RATE PER 100,000 ADULT ABORIGINAL AND TORRES STRAIT ISLANDER POPULATION)									
<b>2008</b>	554.7	260.9	382.4	1 010.7	720.9	133.3	442.9	541.0	505.0
<b>2009</b>	599.6	254.9	335.9	1 080.7	667.8	156.4	532.5	548.1	514.1
<b>2010</b>	558.8	254.2	359.8	1 103.8	692.5	148.8	505.7	666.4	509.2
<b>2009</b>									
Dec Qtr	541.4	309.3	313.7	1 069.9	681.5	125.4	470.1	532.2	485.3
<b>2010</b>									
Mar Qtr	566.7	242.6	350.9	1 031.3	696.2	127.0	523.0	684.4	506.3
Jun Qtr	609.3	270.4	376.7	1 115.5	750.0	141.1	468.2	612.4	532.7
Sep Qtr	548.4	259.6	347.7	1 117.4	664.5	158.0	488.4	696.4	498.4
Dec Qtr	511.0	244.1	363.9	1 151.1	659.3	169.3	543.2	672.4	499.5
SENTENCED (RATE PER 100,000 ADULT ABORIGINAL AND TORRES STRAIT ISLANDER POPULATION)									
<b>2008</b>	1 751.0	955.4	1 299.3	1 450.2	2 990.6	478.6	1 502.0	351.0	1 636.9
<b>2009</b>	1 913.8	979.2	1 398.8	1 499.6	3 365.7	432.1	1 697.5	382.4	1 795.1
<b>2010</b>	1 843.9	1 057.3	1 400.9	1 488.9	3 426.2	421.8	1 694.5	582.4	1 783.1
<b>2009</b>									
Dec Qtr	1 941.0	977.7	1 406.0	1 559.5	3 748.3	434.6	1 689.6	396.1	1 855.0
<b>2010</b>									
Mar Qtr	1 839.6	1 052.2	1 371.3	1 459.9	3 598.2	395.0	1 640.8	492.3	1 786.6
Jun Qtr	1 855.1	1 055.3	1 415.5	1 471.2	3 481.0	434.5	1 740.7	672.4	1 803.9
Sep Qtr	1 841.0	1 036.8	1 418.0	1 482.4	3 404.3	409.1	1 644.8	564.4	1 775.5
Dec Qtr	1 840.0	1 084.7	1 398.9	1 542.3	3 221.4	448.6	1 752.0	600.4	1 766.2
TOTAL (RATE PER 100,000 ADULT ABORIGINAL AND TORRES STRAIT ISLANDER POPULATION)									
<b>2008</b>	2 305.7	1 216.3	1 681.7	2 460.9	3 711.5	611.8	1 944.9	891.9	2 141.9
<b>2009</b>	2 513.4	1 234.1	1 734.7	2 580.3	4 033.5	588.4	2 230.0	930.5	2 309.1
<b>2010</b>	2 402.8	1 311.4	1 760.7	2 592.8	4 118.7	570.6	2 200.2	1 248.8	2 292.3
<b>2009</b>									
Dec Qtr	2 482.3	1 287.0	1 719.7	2 629.3	4 429.8	560.0	2 159.8	928.3	2 340.3
<b>2010</b>									
Mar Qtr	2 406.3	1 294.8	1 722.2	2 491.2	4 294.4	521.9	2 163.8	1 176.8	2 292.9
Jun Qtr	2 464.4	1 325.7	1 792.1	2 586.7	4 231.0	575.5	2 208.9	1 284.8	2 336.6
Sep Qtr	2 389.4	1 296.4	1 765.6	2 599.8	4 068.8	567.1	2 133.1	1 260.8	2 273.9
Dec Qtr	2 351.0	1 328.8	1 762.8	2 693.4	3 880.7	617.9	2 295.1	1 272.8	2 265.7

(a) Rates are based on the Aboriginal and Torres Strait Islander adult population estimates and projections for 30 June of the relevant calendar year – see Explanatory Notes, paragraphs 22–25.

(b) Figures for the quarter and year for first day of the month counts are calculated as a simple average – see Explanatory Notes, paragraph 5.

(c) Excludes persons whose Aboriginal and Torres Strait Islander status is unknown – see Explanatory Notes, paragraph 28.

(d) Excludes ACT prisoners that were in NSW prisons – see Explanatory Notes, paragraph 36.

(e) Includes ACT prisoners held in ACT as well as ACT prisoners that were held in NSW – see Explanatory Notes, paragraph 36.

## PERSONS IN COMMUNITY-BASED CORRECTIONS(a)(b), By sex

	NSW	Vic.	Qld	SA(c)	WA(d)	Tas.	NT(e)	ACT	Aust.(f)
MALES (NUMBER ON FIRST DAY OF MONTH)									
<b>2008</b>	15 075	6 431	11 283	4 752	4 326	908	963	1 100	44 838
<b>2009</b>	15 254	6 943	11 629	4 902	4 377	1 015	971	1 167	46 258
<b>2010</b>	14 175	7 596	12 338	4 627	3 882	1 208	983	1 213	46 022
<b>2009</b>									
Dec Qtr	15 110	7 360	11 935	4 805	4 262	1 080	945	1 178	46 675
<b>2010</b>									
Mar Qtr	14 763	7 347	11 990	4 652	4 094	1 109	991	1 184	46 130
Jun Qtr	14 423	7 454	12 306	4 621	3 987	1 181	996	1 220	46 188
Sep Qtr	13 924	7 751	12 535	4 638	3 812	1 215	1 020	1 233	46 127
Dec Qtr	13 590	7 832	12 520	4 597	3 636	1 329	926	1 213	45 644
Oct	13 700	7 829	12 551	4 592	3 645	1 304	911	1 214	45 746
Nov	13 557	7 784	12 549	4 584	3 666	1 322	928	1 202	45 592
Dec	13 512	7 884	12 459	4 616	3 598	1 361	940	1 224	45 594
FEMALES (NUMBER ON FIRST DAY OF MONTH)									
<b>2008</b>	2 812	1 501	2 838	1 135	1 219	235	137	200	10 078
<b>2009</b>	2 806	1 533	2 979	1 118	1 215	257	148	227	10 283
<b>2010</b>	2 617	1 671	3 113	1 097	1 180	301	154	229	10 362
<b>2009</b>									
Dec Qtr	2 850	1 609	3 087	1 127	1 226	275	140	232	10 546
<b>2010</b>									
Mar Qtr	2 771	1 664	3 045	1 110	1 244	282	156	239	10 511
Jun Qtr	2 642	1 651	3 082	1 094	1 230	297	160	232	10 388
Sep Qtr	2 566	1 683	3 179	1 091	1 154	295	156	230	10 354
Dec Qtr	2 489	1 685	3 146	1 092	1 094	331	145	216	10 198
Oct	2 521	1 672	3 174	1 096	1 110	321	145	221	10 260
Nov	2 489	1 692	3 137	1 098	1 105	335	140	216	10 212
Dec	2 457	1 691	3 126	1 082	1 067	336	151	212	10 122
PERSONS (NUMBER ON FIRST DAY OF MONTH) (g)									
<b>2008</b>	17 954	7 950	14 120	5 888	5 545	1 143	1 100	1 301	55 001
<b>2009</b>	18 137	8 479	14 608	6 021	5 595	1 272	1 119	1 394	56 625
<b>2010</b>	16 851	9 270	15 451	5 725	5 063	1 510	1 138	1 442	56 448
<b>2009</b>									
Dec Qtr	18 032	8 969	15 023	5 934	5 488	1 355	1 085	1 410	57 296
<b>2010</b>									
Mar Qtr	17 602	9 012	15 035	5 761	5 339	1 391	1 147	1 423	56 710
Jun Qtr	17 127	9 108	15 388	5 715	5 217	1 478	1 156	1 452	56 641
Sep Qtr	16 549	9 438	15 714	5 731	4 966	1 509	1 176	1 463	56 546
Dec Qtr	16 127	9 521	15 665	5 691	4 730	1 660	1 072	1 430	55 895
Oct	16 272	9 505	15 725	5 690	4 755	1 625	1 056	1 435	56 063
Nov	16 093	9 479	15 686	5 683	4 771	1 657	1 068	1 418	55 855
Dec	16 017	9 578	15 585	5 699	4 665	1 697	1 091	1 436	55 768

(a) Figures include persons with breached or suspended orders, with the exception of Vic. and Tas.

(b) Figures for the quarter and year for first day of the month counts are calculated as a simple average – see Explanatory Notes, paragraph 5.

(c) Data movements may be influenced by data entry delays – see Explanatory Notes, paragraph 30.

(d) Data are subject to processing delays of 4 to 6 weeks - see Explanatory Notes, paragraph 33.

(e) Excludes bail data for the December quarter 2009 – see Explanatory Notes paragraph 35.

(f) See footnotes c-e.

(g) Includes persons whose sex is unknown.

## COMMUNITY-BASED CORRECTIONS RATES, By sex(a)

	NSW	Vic.	Qld	SA	WA	Tas.	NT	ACT	Aust.
MALES (RATE PER 100,000 ADULT POPULATION)									
<b>2008</b>	577.8	323.4	697.4	782.0	528.7	492.6	1 181.4	844.5	557.9
<b>2009</b>	572.5	339.7	697.2	795.2	514.4	545.0	1 166.4	875.1	560.9
<b>2010</b>	518.7	360.9	718.5	737.6	441.9	640.3	1 145.6	887.0	543.2
<b>2009</b>									
Dec Qtr	562.9	356.6	708.2	774.8	494.5	577.0	1 119.6	875.7	560.9
<b>2010</b>									
Mar Qtr	543.9	351.8	704.1	745.7	470.1	590.1	1 163.1	872.9	548.5
Jun Qtr	528.9	355.3	719.0	738.3	455.4	626.9	1 164.0	896.6	546.7
Sep Qtr	507.8	367.0	727.7	737.6	432.1	642.4	1 186.1	898.8	542.7
Dec Qtr	494.2	369.4	723.4	729.0	410.1	701.6	1 069.2	879.9	535.0
Oct	498.2	369.3	725.2	728.2	411.1	688.4	1 051.5	880.3	536.2
Nov	493.0	367.1	725.1	726.9	413.4	697.9	1 071.1	871.6	534.4
Dec	491.3	371.9	719.9	732.0	405.8	718.5	1 085.0	887.6	534.4
FEMALES (RATE PER 100,000 ADULT POPULATION)									
<b>2008</b>	103.6	72.4	172.2	178.7	150.5	121.0	184.1	148.9	121.7
<b>2009</b>	101.3	72.1	175.6	173.5	145.3	130.7	192.6	165.4	121.2
<b>2010</b>	92.3	76.6	178.2	167.6	136.7	151.5	194.3	163.4	119.1
<b>2009</b>									
Dec Qtr	102.1	75.1	180.3	174.1	145.1	139.7	180.5	168.1	123.3
<b>2010</b>									
Mar Qtr	98.4	76.9	175.8	170.5	145.3	142.7	198.3	171.5	121.7
Jun Qtr	93.4	76.0	177.0	167.5	142.9	149.6	201.5	165.9	119.7
Sep Qtr	90.3	76.9	181.5	166.3	133.1	147.9	195.7	163.2	118.7
Dec Qtr	87.3	76.7	178.7	166.1	125.6	165.7	181.7	153.0	116.4
Oct	88.4	76.1	180.3	166.7	127.5	160.8	181.3	156.3	117.2
Nov	87.3	77.0	178.2	167.0	126.9	167.9	175.0	152.8	116.6
Dec	86.2	77.0	177.6	164.5	122.5	168.4	188.8	150.0	115.6
PERSONS (RATE PER 100,000 ADULT POPULATION) (b)									
<b>2008</b>	337.3	195.7	432.4	473.7	340.6	301.9	704.9	491.1	337.0
<b>2009</b>	333.8	203.4	434.3	477.6	331.6	332.4	699.0	515.0	338.5
<b>2010</b>	302.7	216.3	446.1	446.7	290.7	389.5	688.5	520.4	328.8
<b>2009</b>									
Dec Qtr	329.4	213.2	442.1	468.0	321.5	352.7	669.3	517.1	339.6
<b>2010</b>									
Mar Qtr	318.3	212.0	437.7	452.0	309.2	360.6	699.3	517.4	332.7
Jun Qtr	308.3	213.2	445.6	446.9	300.5	382.1	701.3	526.2	330.8
Sep Qtr	296.3	219.5	452.2	446.1	283.9	388.7	710.1	526.0	328.3
Dec Qtr	287.9	220.5	448.8	441.7	269.2	426.7	643.2	511.9	323.3
Oct	290.5	220.2	450.5	441.7	270.6	417.8	633.8	513.8	324.2
Nov	287.3	219.6	449.4	441.1	271.5	426.0	641.0	507.7	323.0
Dec	285.9	221.9	446.5	442.4	265.4	436.3	654.8	514.2	322.5

(a) With the exception of Vic. and Tas., the number of persons in community-based corrections includes those persons with breached or suspended orders.

(b) Includes persons whose sex is unknown.

NSW Vic. Qld SA(d) WA(e) Tas.(f) NT(g) ACT(h) Aust.(i)

RESTRICTED MOVEMENT (NUMBER ON FIRST DAY OF MONTH)

<b>2008</b>	151	31	..	421	6	..	32	..	640
<b>2009</b>	164	34	..	445	4	..	34	..	681
<b>2010</b>	136	38	..	415	1	..	28	..	618
<b>2009</b>									
Dec Qtr	147	28	..	419	5	..	32	..	631
<b>2010</b>									
Mar Qtr	150	39	..	408	3	..	32	..	632
Jun Qtr	137	36	..	417	2	..	26	..	618
Sep Qtr	126	36	..	424	—	..	29	..	616
Dec Qtr	130	39	..	410	—	..	24	..	604
Oct	132	39	..	415	—	..	24	..	610
Nov	122	43	..	414	—	..	23	..	602
Dec	135	36	..	402	—	..	26	..	599

REPARATION-FINE OPTION (NUMBER ON FIRST DAY OF MONTH)

<b>2008</b>	16	1 763	542	646	208	50	—	..	3 224
<b>2009</b>	21	1 846	498	581	353	26	—	..	3 326
<b>2010</b>	11	2 294	780	489	304	15	—	..	3 893
<b>2009</b>									
Dec Qtr	21	2 054	586	558	421	17	—	..	3 658
<b>2010</b>									
Mar Qtr	14	2 218	651	515	358	17	—	..	3 773
Jun Qtr	12	2 239	776	476	342	17	—	..	3 862
Sep Qtr	11	2 358	852	477	291	13	—	..	4 002
Dec Qtr	7	2 360	841	489	227	12	—	..	3 936
Oct	8	2 363	831	481	249	12	—	..	3 944
Nov	7	2 308	840	486	235	12	—	..	3 888
Dec	5	2 409	852	500	198	12	—	..	3 976

REPARATION-COMMUNITY SERVICE (NUMBER ON FIRST DAY OF MONTH)

<b>2008</b>	3 979	679	1 854	1 005	1 473	500	184	161	9 835
<b>2009</b>	4 180	741	1 943	1 146	1 449	584	158	190	10 391
<b>2010</b>	3 836	690	2 236	1 113	1 330	752	124	204	10 284
<b>2009</b>									
Dec Qtr	4 192	762	2 142	1 212	1 541	610	111	201	10 771
<b>2010</b>									
Mar Qtr	4 062	740	2 240	1 126	1 439	657	117	211	10 592
Jun Qtr	4 002	676	2 306	1 075	1 392	722	119	210	10 502
Sep Qtr	3 788	668	2 235	1 113	1 292	752	136	203	10 188
Dec Qtr	3 491	673	2 164	1 138	1 196	877	123	192	9 854
Oct	3 605	671	2 215	1 113	1 199	838	124	191	9 956
Nov	3 455	674	2 167	1 130	1 202	873	119	192	9 812
Dec	3 412	675	2 109	1 172	1 187	920	127	192	9 794

.. not applicable

— nil or rounded to zero (including null cells)

- (a) If a person has more than one type of order, they are counted against each order in this table. If a person has more than one order of the same order type, they are counted only once in the order type.
- (b) Figures for the quarter and year for first day of the month counts are calculated as a simple average – see Explanatory Notes, paragraph 5.
- (c) Figures include persons with breached or suspended orders, with the exception of Vic. and Tas.
- (d) Data movements may be influenced by data entry delays – see Explanatory Notes, paragraph 32.

(e) Data are subject to processing delays of 4 to 6 weeks – see Explanatory Notes, paragraph 33.

(f) A trial of new bail orders was conducted in the 2007-08 financial year – see Explanatory Notes, paragraph 34.

(g) Caution should be exercised as a new processing system was introduced by the NT in September 2009 resulting in significant changes to some community-based order counts. Bail counts were unable to be supplied in December quarter 2009 – see Explanatory Notes paragraph 35.

(h) Data movements for bail orders may have been influenced by data quality checks during the December quarter 2008 – see Explanatory Notes, paragraph 39.

(i) See footnotes d-h.

	NSW	Vic.	Qld	SA(d)	WA(e)	Tas.(f)	NT(g)	ACT(h)	Aust.(i)
SUPERVISION (COMPLIANCE)–PAROLE (NUMBER ON FIRST DAY OF MONTH)									
<b>2008</b>	4 246	1 494	3 793	903	1 317	96	90	113	12 051
<b>2009</b>	4 286	1 502	4 173	981	1 173	128	80	100	12 423
<b>2010</b>	4 304	1 529	4 256	990	592	117	98	108	11 994
<b>2009</b>									
Dec Qtr	4 417	1 521	4 297	982	852	134	100	105	12 408
<b>2010</b>									
Mar Qtr	4 378	1 500	4 194	993	713	119	95	101	12 093
Jun Qtr	4 253	1 544	4 189	993	597	117	99	104	11 896
Sep Qtr	4 255	1 530	4 312	982	543	115	107	110	11 953
Dec Qtr	4 330	1 541	4 329	994	514	118	93	116	12 034
Oct	4 283	1 533	4 330	981	510	120	87	113	11 957
Nov	4 301	1 550	4 355	999	518	119	95	118	12 055
Dec	4 406	1 541	4 301	1 001	513	114	98	116	12 090

	NSW	Vic.	Qld	SA(d)	WA(e)	Tas.(f)	NT(g)	ACT(h)	Aust.(i)
SUPERVISION (COMPLIANCE)–BAIL (NUMBER ON FIRST DAY OF MONTH)									
<b>2008</b>	226	..	..	858	275	18	5	229	1 612
<b>2009</b>	207	..	..	829	310	..	na	206	1 568
<b>2010</b>	199	..	..	738	304	..	24	251	1 516
<b>2009</b>									
Dec Qtr	190	..	..	757	332	..	na	226	1 505
<b>2010</b>									
Mar Qtr	189	..	..	805	298	..	24	231	1 547
Jun Qtr	198	..	..	765	302	..	31	246	1 542
Sep Qtr	206	..	..	725	300	..	22	269	1 522
Dec Qtr	204	..	..	656	315	..	20	257	1 452
Oct	208	..	..	675	297	..	17	254	1 451
Nov	207	..	..	652	325	..	22	254	1 460
Dec	197	..	..	641	323	..	22	263	1 446

	NSW	Vic.	Qld	SA(d)	WA(e)	Tas.(f)	NT(g)	ACT(h)	Aust.(i)
SUPERVISION (COMPLIANCE)–SENTENCED PROBATION (NUMBER ON FIRST DAY OF MONTH)									
<b>2008</b>	11 098	4 184	9 040	3 161	3 645	636	819	1 026	33 609
<b>2009</b>	11 073	4 645	9 123	3 185	3 616	735	867	1 139	34 383
<b>2010</b>	9 923	5 035	9 512	3 027	3 620	915	926	1 154	34 111
<b>2009</b>									
Dec Qtr	10 790	4 906	9 222	3 118	3 719	812	896	1 148	34 611
<b>2010</b>									
Mar Qtr	10 475	4 821	9 211	3 026	3 679	833	934	1 193	34 172
Jun Qtr	10 145	4 897	9 471	3 052	3 722	895	935	1 167	34 284
Sep Qtr	9 685	5 171	9 676	3 054	3 622	928	951	1 143	34 229
Dec Qtr	9 386	5 250	9 690	2 973	3 456	1 003	884	1 114	33 757
Oct	9 508	5 238	9 720	2 991	3 485	990	873	1 127	33 932
Nov	9 415	5 266	9 680	2 964	3 467	1 004	882	1 101	33 779
Dec	9 236	5 247	9 669	2 965	3 416	1 016	897	1 115	33 561

.. not applicable

na not available

- (a) If a person has more than one type of order, they are counted against each order in this table. If a person has more than one order of the same order type, they are counted only once in the order type.
- (b) Figures for the quarter and year for first day of the month counts are calculated as a simple average – see Explanatory Notes, paragraph 5.
- (c) Figures include persons with breached or suspended orders, with the exception of Vic. and Tas.
- (d) Data movements may be influenced by data entry delays – see Explanatory Notes, paragraph 32.

(e) Data are subject to processing delays of 4 to 6 weeks – see Explanatory Notes, paragraph 33.

(f) A trial of new bail orders was conducted in the 2007-08 financial year – see Explanatory Notes, paragraph 34.

(g) Caution should be exercised as a new processing system was introduced by the NT in September 2009 resulting in significant changes to some community-based order counts. Bail counts were unable to be supplied in December quarter 2009 – see Explanatory Notes paragraph 35.

(h) Data movements for bail orders may have been influenced by data quality checks during the December quarter 2008 – see Explanatory Notes, paragraph 39.

(i) See footnotes d-h.

## EXPLANATORY NOTES

### INTRODUCTION

**1** This publication presents statistical series on persons held in either adult corrective services custody or who are serving adult community-based orders in Australia. It contains data on the number of persons by their sex, Aboriginal and Torres Strait Islander status, type of custody, legal status and sentence type; the number of sentenced persons received into corrective services custody each month; and the number of federal prisoners. Experimental data on Aboriginal and Torres Strait Islander persons in community based corrections are also available in the Appendix.

**2** Statistics presented in this publication are compiled in three ways:

- Average daily prisoner population: Counts taken on each day of the month are summed and divided by the number of days in that month to determine the average daily prisoner population for that month. The average daily periodic detainee population is a count of persons on periodic detention on each day a centre is open, divided by the number of days a centre is open.
- Sentenced prisoner reception figures: Counts are provided each month on the number of receptions where a prisoner is received as a sentenced prisoner. This includes prisoners with a change of legal status from unsentenced to sentenced.
- First day of the month prisoner population: Counts of prisoners and persons serving community-based corrections orders, taken on or near the first day of the month (see paragraphs 4 and 5).

**3** Although national standards and classifications are used in the compilation of these statistics, some discrepancies remain between the states and territories. These are due to legislative and procedural differences between jurisdictions and the way that these differences are reflected in agencies' administrative data systems. As part of its quality assurance strategy, the ABS is working with corrective services agencies to minimise the effect of these differences.

### REFERENCE PERIOD

**4** The reference period for average daily prisoner population statistics and sentenced reception counts is the complete reference month. The reference date for all other figures is the first day of the reference month. However, not all states and territories report strictly according to this 'first day of the month' rule:

- The Western Australian and Australian Capital Territory prisoners in New South Wales prisons populations are counted as at midnight on the last day of the month. In these cases the figures provided are taken to represent the prison population at the beginning of the following month.

**5** Calculation of figures for the entire quarter and entire year varies depending on the counting unit and method of counting prisoners:

- Average daily figures: Figures are calculated by weighting the average according to the number of days in each month, quarter or year.
- First day of the month: Figures are simple averages. For quarterly figures, the sum of the monthly data is divided by three; for yearly figures, the figures for each month are added and the total divided by twelve.
- Sentenced receptions: Figures are totals of each month.
- These figures may be subject to rounding.

### SCOPE

**6** The scope of the statistics in this publication includes all persons remanded or sentenced to adult custodial facilities (including Work Outreach Camps and Community Custody Centres in Queensland), or who are serving adult community-based orders in each state and territory in Australia.

## EXPLANATORY NOTES *continued*

### SCOPE *continued*

**7** Counts of prisoners in the following custodial facilities are included in the collection:

- gazetted prisons in all jurisdictions;
- periodic detention centres in New South Wales and the Australian Capital Territory;
- community custody centres and work outreach camps in Queensland;
- cells in court complexes administered by corrective services in New South Wales;
- transitional centres in New South Wales; and
- lock-ups in Western Australia operated by the police but designated as a prison by the Chief Executive Officer of Corrective Services.

**8** The prisons and community corrections collection excludes the following custodial facilities:

- police lockups, police prisons and cells in court complexes not administered and controlled by corrective services;
- gazetted police prisons in the Northern Territory;
- juvenile detention centres, including those under the authority of adult corrective services;
- immigration detention centres; and
- military prisons.

**9** This collection includes counts of persons remanded or sentenced to adult custody facilities, or directed to serve community based orders administered by adult corrective services agencies. In all states and territories except Queensland, persons are considered adults if aged 18 years and over. In Queensland persons are considered adults if aged 17 years and over. The vast majority of persons counted in the collection are adults. However, juveniles may be included in exceptional circumstances.

**10** Since December 2004, the Kariong Juvenile Correctional Centre in New South Wales has operated under the authority of adult corrective services. The population at Kariong Juvenile Correctional Centre may include adult persons as well as juveniles. New South Wales includes juveniles based in Kariong in this collection, however, this facility accounts for less than 0.5% of the New South Wales prisoner population.

**11** Federal prisoners include those persons charged and sentenced under a Commonwealth statute, and those persons who are charged and sentenced under the laws of another country but transferred to an Australian prison to serve their sentence under the *International Transfer of Prisoners Act 1997* (Cwlth). To give practical effect to this legislation in Australia, the framework was introduced in January 2003. For the purposes of this publication, federal sentenced prisoners are those persons who are recognised by the Criminal Law Division of the Australian Government Attorney-General's Department as having been charged and sentenced under a Commonwealth statute, or transferred from another country to serve their sentence in Australia.

**12** With the exception of Victoria and Tasmania, community-based corrections includes those persons with breached or suspended orders.

### DATA SOURCE

**13** Statistics in this publication are derived from information provided to the ABS from administrative records held by corrective services agencies within each state and territory. Statistics on federal prisoners are derived from records kept by the Criminal Law Division of the Australian Government Attorney-General's Department.

### COUNTING RULES

**14** Statistics for persons held in custody are presented by the state or territory in which they were held and therefore may not be the sentencing jurisdiction. The only exception to this are data for federal sentenced prisoners. These are presented by the state or territory in which they were sentenced, not where they were held in custody.

## EXPLANATORY NOTES *continued*

### COUNTING RULES *continued*

**15** Sentenced prisoners who have other offences that are unsentenced are counted as sentenced. Prisoners may be unsentenced because they are awaiting the outcome of their trial, convicted but awaiting sentence, or awaiting deportation.

**16** If an offender has two or more different types of community-based orders operating simultaneously, then each order will be counted. If two or more community-based orders are of the same type, these orders together will only be counted as one order.

### RATES

**17** Imprisonment and community-based corrections rates enable comparisons of prisoner numbers to be made across states and territories. Prisoner and community-based corrections rates are expressed per 100,000 adult population. Imprisonment rates are calculated based on two different counting concepts (average daily and first day of the month), as a result there may be variations in imprisonment rates presented in this publication.

**18** In this publication the population figures used in the calculation of rates are for persons aged 18 years and over for all states and territories except Queensland where the population is persons aged 17 years and over (see paragraph 9).

**19** Rates for the total adult prisoner population and persons in community-based corrections are calculated using the estimated resident population (ERP) for each of the states and territories. All estimates for the Australian Capital Territory exclude Jervis Bay Territory. All estimates for Australia exclude the external territories of Christmas Island and the Cocos (Keeling) Island. As the population changes over time the denominator used for the calculation of rates varies, depending on the reference period. The most current ERP data available at the time of publication are used to calculate rates as follows:

- for the March quarter, ERP is from the previous September quarter;
- for the June quarter, ERP is from the previous December quarter;
- for the September quarter, ERP is from the previous March quarter;
- for the December quarter, ERP is from the previous June quarter; and
- annual rates are an average of the rates of the contributing quarters.

**20** The ERP series are revised every five years to incorporate additional information available from the latest Census of Population and Housing. The rates per 100,000 adult persons presented in this issue have been calculated using different ERP counts as follows:

- Rates from the June 2007 quarter (excluding Aboriginal and Torres Strait Islander rates) are calculated using rebased data from the intercensal period (2001-2006) sourced from the 2006 Census of Population and Housing;
- All other rates (excluding Aboriginal and Torres Strait Islander rates) are calculated using ERP data based on the 2001 Census of Population and Housing.

**21** For population estimates and information on the methodology used to produce the ERP, see *Australian Demographic Statistics* (cat. no. 3101.0).

### *Aboriginal and Torres Strait Islander imprisonment rates*

**22** Rates for the Aboriginal and Torres Strait Islander adult population are calculated using rebased estimates (for the period 1986 - 2006) and projections (2007 - 2021) of the Aboriginal and Torres Strait Islander population. These data are based on data from the 2006 Census of Population and Housing and use assumptions about future fertility, paternity, life expectancy at birth and migration. For more information see *Experimental Estimates and Projections, Aboriginal and Torres Strait Islander Australians, 1991 to 2021* (cat. no. 3238.0).



## EXPLANATORY NOTES *continued*

### *Aboriginal and Torres Strait Islander imprisonment rates continued*

**23** The projections used in this publication are based on Series B projections for 30 June of the relevant calendar year. Series B is one of two main projection series (Series A and B) that have been published for the years 2007 to 2021. Both of these series assume an annual decline of 0.5% in fertility rates; an annual increase of 1% in paternity rates; constant interstate migration at levels observed in the 2006 Census; and zero net overseas migration with no arrivals and no departures. Further, two different assumptions were made about future Aboriginal and Torres Strait Islander life expectancy at birth for Australia:

- In Series A, Aboriginal and Torres Strait Islander life expectancy at birth will remain constant; and
- In Series B, Aboriginal and Torres Strait Islander life expectancy at birth will increase by 0.3 years per year for both males and females.

**24** The impact of re-basing Aboriginal and Torres Strait Islander imprisonment rate data using Series B projections, instead of the previous "low series" of projections, is minimal at the national level. Differences of no greater than 5% are seen in the state and territory data, and generally the result has been a decrease in the imprisonment rate. This is because the assumptions used by Series B result in higher population estimates and projections than those through the use of the previous "low series".

**25** The decision to use Series B as the denominator in the calculation of Aboriginal and Torres Strait Islander imprisonment rates followed consultation with the National Corrective Services Statistics Advisory Group and other stakeholders.

### ABORIGINAL AND TORRES STRAIT ISLANDER IDENTIFICATION

**26** The ABS conducts an ongoing programme of quality assurance to monitor and improve the quality of Aboriginal and Torres Strait Islander Status data in Corrective Services agencies (both custodial and community-based corrections). Whilst the ABS has published Aboriginal and Torres Strait Islander status data in Corrective Services collections for a number of years, quality assurance is required to better understand the level of accuracy over time

**27** The quality of the Aboriginal and Torres Strait Islander status information collected and recorded in Corrective Services agencies is assessed against the ABS Standard Indigenous Question (SIQ). The SIQ is based upon self-identification by the individual who comes into contact with Corrective Services agencies. The quality of Aboriginal and Torres Strait Islander data is being reviewed in 2010 and 2011.

**28** Some persons in custody are recorded with an unknown Aboriginal and Torres Strait Islander status on the information systems of corrective agencies as their status has not been able to be obtained. Persons with Aboriginal and Torres Strait Islander status unknown are excluded from tables 13 -16. Counts of persons with an unknown Aboriginal and Torres Strait Islander status are included in all other tables. Unknowns account for just over 2% of all records.

### SIGNIFICANT EVENTS *New South Wales*

**29** In March 2008, the administrative classification of the Wellington Correctional Centre was altered. The classification was changed from 'open' to 'secure' for 75% of the facility to reflect the change in the profile of inmates held. As such, the proportion of persons in secure and open custody altered in the March quarter 2008 compared to previous quarters.

### *South Australia*

**30** Data on community-based correction orders extracted from the South Australian information system from the June quarter 2005 may be subject to data processing time lags.

### *Western Australia*

**31** Prior to the September quarter 2009, Western Australian data on type of custody are not comparable. Data prior to this period were based on a prisoner's security rating rather than the rating of the prison (see Glossary). As a result, prisoners with a minimum

## EXPLANATORY NOTES *continued*

security rating and located in a medium or maximum security prison were classified as open custody. Data for prisoners in secure custody are understated, whilst data for persons in open custody are overstated prior to September quarter 2009.

**32** The large increase in prisoners from early 2009 was due to fewer offenders being granted parole by the Prisoner Review Board, increased incarcerations by the courts and the impact of the Truth in Sentencing legislation. Implemented on 23 September 2008, the Truth in Sentencing legislation refers to the Sentencing Act (WA) 1995, Transitional Provisions which removes the automatic 1/3 discount for each and every offence that appears in WA Statute books.

**33** Data for community-based correction orders extracted from the Western Australian information system are subject to data processing time lags of 4-6 weeks. Fine option orders are most likely to be impacted by the lag, with approximately 10% of each month's data entry delayed.

### *Tasmania*

**34** Tasmania trialled new orders for bail, suspended sentences and drug treatment as part of the Court Mandated Diversion program (CMD) from 1 July 2007 to 30 June 2008. Counts for supervision (compliance) - bail orders during the September quarter 2008 represent the transitional period concluding this trial. These orders are now being handled by alternative service providers and are therefore no longer included.

### *Northern Territory*

**35** In September 2009 a new offender management system was implemented - the Integrated Offender Management System (IOMS). The transition to the new system resulted in a number of data impacts, and as such caution should be exercised in comparing current data with that prior to December 2009. The impacts included:

- significantly increased counts for sentenced receptions and some community based orders following the introduction of the system,
- overstated community based orders for the period from December quarter 2009 to September quarter 2010 (due to difficulties in identifying persons who have been in breach for 3 years or more), and
- bail counts for December quarter 2009 were also unable to be supplied, impacting the territory totals for community based orders and to a lesser extent on the Australian total.

### *Australian Capital Territory*

**36** From the September quarter 2009, all ACT sentenced and unsentenced prisoners are held within the ACT. From the June quarter 2009 all sentenced prisoner receptions were detained within the Australian Capital Territory. For this same period nearly all ACT prisoners held in New South Wales prisons were transferred to a new custodial facility (Alexander Maconochie Centre) which commenced taking prisoners in March 2009. This prison is a secure facility. Between 2000 and March quarter 2009, persons sentenced to full-time custody by the Australian Capital Territory were usually held in New South Wales prisons as the Australian Capital Territory only had two remand centres for unsentenced prisoners and a periodic detention centre. Unsented Australian Capital Territory prisoners may have also been detained in New South Wales prisons. The exception was for persons sentenced for fine default; these prisoners were detained in Australian Capital Territory remand.

**37** A backlog of prisoners sentenced in the ACT awaiting transfer to NSW remained in the ACT during the transition of the opening of the new ACT prison. These sentenced prisoners were classified as 'unsentenced' prior to the December quarter 2009. With the opening of the new prison, sentenced reception counts better reflect accurate recording of sentenced and unsentenced prisoners, resulting in an increase in sentenced prisoner receptions from the September quarter 2009.

## EXPLANATORY NOTES *continued*

### *Australian Capital Territory continued*

**38** To provide a greater understanding of the number of prisoners attributed to the Australian Capital Territory, while presenting an accurate picture of the New South Wales prisoner population, statistics relating to Australian Capital Territory prisoners held in New South Wales prisons prior to the June quarter 2009 were presented as a subset of the New South Wales figures in editions of this publication prior to the June quarter 2010 release.

**39** The decline in supervision bail compliance orders in December 2008 may have been partly influenced by data quality checks. Records with no completion or expiry date that should have been finalised on the system were marked as completed during this period.

**40** Imprisonment rate data for the Australian Capital Territory are calculated on the basis of the total number of Australian Capital Territory prisoners (i.e. Australian Capital Territory prisoners that were held in New South Wales prisons, prior to September quarter 2009, and Australian Capital Territory prisoners held in the Australian Capital Territory) divided by the estimated resident Australian Capital Territory adult population and multiplied by 100,000. For New South Wales, the imprisonment rate is based on the count of New South Wales prisoners, excluding Australian Capital Territory prisoners held in New South Wales prisons prior to September quarter 2009, divided by the estimated resident New South Wales adult population and multiplied by 100,000. Time series data have also been derived on this basis.

### RELATED PUBLICATIONS

#### *ABS Publications*

- 41** Other ABS publications that may be of interest include:
- Australian Demographic Statistics* (cat. no. 3101.0) – issued quarterly
  - Australian Social Trends* (cat. no. 4102.0) – issued quarterly
  - Australian Standard Offence Classification (second edition)* (cat. no. 1234.0) – released 1 August 2008
  - Crime Victimization, Australia* (cat. no. 4530.0) – issued annually
  - Criminal Courts, Australia* (cat. no. 4513.0) – issued annually
  - Experimental Estimates and Projections, Aboriginal and Torres Strait Islander Australians, 1991 to 2021* (cat. no. 3238.0) – released 8 September 2009
  - General Social Survey: Summary Results, Australia* (cat. no. 4159.0) – irregular
  - Information Paper: Measuring Crime Victimization, Australia: The Impact of Different Collection Methodologies* (cat. no. 4522.0.55.001) – single issue
  - Information Paper: National Criminal Justice Statistical Framework* (cat. no. 4525.0) – single issue
  - Information Paper: National Information Development Plan for Crime and Justice Statistics 2005* (cat. no. 4520.0) – single issue
  - Measures of Australia's Progress* (cat. no. 1370.0) – released 15 September 2010
  - Personal Fraud Survey* (cat. no. 4528.0) – released 27 June 2008
  - Personal Safety Survey* (cat. no. 4906.0) – released 21 August 2006
  - Prisoners in Australia* (cat. no. 4517.0) – issued annually
  - Recorded Crime – Victims, Australia* (cat. no. 4510.0) – issued annually
  - Recorded Crime – Offenders, Selected states and territories* (cat. no. 4519.0) – issued annually
  - Sexual Assault in Australia: A Statistical Overview* (cat. no. 4523.0) – single issue

**42** Current publications and other products released by the ABS are available from the ABS website <<http://www.abs.gov.au>>. The ABS also issues a daily Release Advice on the website that details products to be released in the week ahead. The National Centre for Crime and Justice Statistics releases *Crime and Justice News* (cat. no. 4500.0), an annual newsletter that is published on the ABS website. The Centre can be contacted by email through <[crime.justice@abs.gov.au](mailto:crime.justice@abs.gov.au)>.

#### *Non-ABS Publications*

**43** Non-ABS sources that may be of interest include:

## EXPLANATORY NOTES *continued*

---

### *Non-ABS Publications continued*

- Australian Institute of Criminology, *List of Publications* – irregular  
<<http://www.aic.gov.au>>
- Crime Research Centre, University of Western Australia, *Crime and Justice Statistics for Western Australia* – issued annually  
<<http://www.crc.law.uwa.edu.au>>
- Department of Corrective Services, New South Wales, *NSW Inmate Census* – irregular  
<<http://www.dcs.nsw.gov.au>>
- Department of Justice, Northern Territory, *Northern Territory Quarterly Crime and Justice Statistics* – issued quarterly  
<<http://www.nt.gov.au/justice/>>
- Department of Justice, Victoria, *Statistical Profile of the Victorian Prison System* – issued annually  
<<http://www.justice.vic.gov.au>>
- NSW Bureau of Crime Statistics and Research, *New South Wales Criminal Courts Statistics* – issued annually  
<<http://www.lawlink.nsw.gov.au>>
- Office of Crime Statistics and Research, *South Australia, Crime and Justice in South Australia* – issued annually  
<<http://www.ocsar.sa.gov.au>>
- Steering Committee for the Review of Commonwealth/State Service Provision, *Report on Government Services* – issued annually  
<<http://www.pc.gov.au>>

# APPENDIX EXPERIMENTAL COMMUNITY-BASED CORRECTIONS DATA

---

## INTRODUCTION

This appendix presents experimental data for Aboriginal and Torres Strait Islander persons in community-based corrections. Data are presented as the number of Indigenous persons on community-based corrections orders on the first day of the month.

As Aboriginal and Torres Strait Islander Status data for persons under the supervision of Community-Based Corrections are still experimental, care should be taken when referring to this data. The quality of Aboriginal and Torres Strait Islander data is being reviewed in 2010–11.

# APPENDIX EXPERIMENTAL COMMUNITY-BASED CORRECTIONS DATA

*continued*

## A1 PERSONS IN COMMUNITY-BASED CORRECTIONS(a)(b), By Aboriginal and Torres Strait Islander status

	NSW	Vic.	Qld	SA(c)	WA(d)	Tas.	NT(e)	ACT	Aust.(f)
ABORIGINAL AND TORRES STRAIT ISLANDER (NUMBER ON FIRST DAY OF MONTH)									
<b>2008</b>	3 178	353	2 556	928	1 815	132	847	125	9 935
<b>2009</b>	3 169	439	2 823	1 001	1 949	161	860	153	10 555
<b>2010</b>	3 112	511	3 242	1 026	1 687	192	819	149	10 739
<b>2009</b>									
Dec Qtr	3 195	479	3 014	1 018	1 861	173	788	154	10 682
<b>2010</b>									
Mar Qtr	3 132	485	3 095	1 028	1 794	171	825	144	10 674
Jun Qtr	3 033	507	3 202	1 026	1 750	191	833	149	10 691
Sep Qtr	3 146	522	3 297	1 039	1 653	195	834	148	10 833
Dec Qtr	3 136	532	3 375	1 012	1 552	209	785	155	10 756
Oct	3 145	524	3 345	1 026	1 581	205	773	158	10 757
Nov	3 126	545	3 391	1 015	1 554	210	777	153	10 771
Dec	3 136	526	3 390	994	1 521	213	804	155	10 739
NON-INDIGENOUS (NUMBER ON FIRST DAY OF MONTH)									
<b>2008</b>	13 793	6 946	11 564	4 919	3 715	970	252	1 075	43 234
<b>2009</b>	13 119	7 220	11 785	4 956	3 626	1 067	258	1 166	43 197
<b>2010</b>	12 235	8 308	12 208	4 651	3 366	1 275	319	1 174	43 536
<b>2009</b>									
Dec Qtr	12 792	8 127	12 008	4 840	3 612	1 123	297	1 159	43 958
<b>2010</b>									
Mar Qtr	12 472	8 174	11 940	4 678	3 524	1 147	322	1 166	43 423
Jun Qtr	12 066	8 130	12 186	4 630	3 460	1 247	323	1 193	43 235
Sep Qtr	12 257	8 375	12 417	4 650	3 309	1 285	342	1 197	43 832
Dec Qtr	12 146	8 553	12 290	4 647	3 171	1 419	287	1 141	43 654
Oct	12 204	8 476	12 380	4 637	3 168	1 392	283	1 143	43 683
Nov	12 135	8 619	12 295	4 634	3 211	1 416	291	1 139	43 740
Dec	12 099	8 563	12 195	4 669	3 135	1 450	287	1 140	43 538
UNKNOWN (NUMBER ON FIRST DAY OF MONTH)									
<b>2008</b>	983	651	—	41	15	41	1	101	1 833
<b>2009</b>	1 849	820	—	64	20	44	1	75	2 873
<b>2010</b>	1 504	451	—	47	10	43	—	119	2 174
<b>2009</b>									
Dec Qtr	2 044	363	—	76	16	59	—	98	2 656
<b>2010</b>									
Mar Qtr	1 997	353	—	55	22	73	—	113	2 613
Jun Qtr	2 029	471	—	60	6	39	—	111	2 716
Sep Qtr	1 146	542	—	41	4	30	—	118	1 881
Dec Qtr	846	436	—	32	7	31	—	134	1 486
Oct	923	505	—	27	6	28	—	134	1 623
Nov	832	315	—	34	6	31	—	126	1 344
Dec	782	489	—	36	9	34	—	141	1 491

— nil or rounded to zero (including null cells)

(a) Figures include persons with breached or suspended orders, with the exception of Vic. and Tas.

(b) Figures for the quarter and year for first day of the month counts are calculated as a simple average – see Explanatory Notes, paragraph 5.

(c) Data movements may be influenced by data entry delays – see Explanatory Notes, paragraph 30.

(d) Data is subject to processing delays of 4 to 6 weeks – see Explanatory Notes, paragraph 33.

(e) Excludes bail data for the December quarter 2009 – see Explanatory Notes paragraph 35.

(f) See footnotes c-e.

# APPENDIX EXPERIMENTAL COMMUNITY-BASED CORRECTIONS DATA

*continued*

## **A1** PERSONS IN COMMUNITY-BASED CORRECTIONS(a)(b), By Aboriginal and Torres Strait Islander status *continued*

	NSW	Vic.	Qld	SA(c)	WA(d)	Tas.	NT(e)	ACT	Aust.(f)
PERSONS (NUMBER ON FIRST DAY OF MONTH)									
<b>2008</b>	17 954	7 950	14 120	5 888	5 545	1 143	1 100	1 301	55 001
<b>2009</b>	18 137	8 479	14 608	6 021	5 595	1 272	1 119	1 394	56 625
<b>2010</b>	16 851	9 270	15 451	5 725	5 063	1 510	1 138	1 442	56 448
<b>2009</b>									
Dec Qtr	18 032	8 969	15 023	5 934	5 488	1 355	1 085	1 410	57 296
<b>2010</b>									
Mar Qtr	17 602	9 012	15 035	5 761	5 339	1 391	1 147	1 423	56 710
Jun Qtr	17 127	9 108	15 388	5 715	5 217	1 478	1 156	1 452	56 641
Sep Qtr	16 549	9 438	15 714	5 731	4 966	1 509	1 176	1 463	56 546
Dec Qtr	16 127	9 521	15 665	5 691	4 730	1 660	1 072	1 430	55 895
Oct	16 272	9 505	15 725	5 690	4 755	1 625	1 056	1 435	56 063
Nov	16 093	9 479	15 686	5 683	4 771	1 657	1 068	1 418	55 855
Dec	16 017	9 578	15 585	5 699	4 665	1 697	1 091	1 436	55 768

- (a) Figures include persons with breached or suspended orders, with the exception of Vic. and Tas.
- (b) Figures for the quarter and year for first day of the month counts are calculated as a simple average – see Explanatory Notes, paragraph 5.
- (c) Data movements may be influenced by data entry delays – see Explanatory Notes, paragraph 30.
- (d) Data is subject to processing delays of 4 to 6 weeks – see Explanatory Notes, paragraph 33.
- (e) Excludes bail data for the December quarter 2009 – see Explanatory Notes paragraph 35.
- (f) See footnotes c-e.

# APPENDIX EXPERIMENTAL COMMUNITY-BASED CORRECTIONS DATA

*continued*

**A2** PROPORTION OF PERSONS IN COMMUNITY-BASED CORRECTIONS(a)(b), By Aboriginal and Torres Strait Islander status

	NSW	Vic.	Qld	SA(c)	WA(d)	Tas.	NT(e)	ACT	Aust.(f)
ABORIGINAL AND TORRES STRAIT ISLANDER (%)									
<b>2008</b>	17.7	4.4	18.1	15.8	32.7	11.5	77.0	9.6	18.1
<b>2009</b>	17.5	5.2	19.3	16.6	34.8	12.7	76.8	11.0	18.6
<b>2010</b>	18.5	5.5	21.0	17.9	33.3	12.7	72.0	10.3	19.0
<b>2009</b>									
Dec Qtr	17.7	5.3	20.1	17.2	33.9	12.8	72.7	10.9	18.6
<b>2010</b>									
Mar Qtr	17.8	5.4	20.6	17.8	33.6	12.3	72.0	10.1	18.8
Jun Qtr	17.7	5.6	20.8	17.9	33.6	12.9	72.0	10.2	18.9
Sep Qtr	19.0	5.5	21.0	18.1	33.3	12.9	70.9	10.1	19.2
Dec Qtr	19.4	5.6	21.5	17.8	32.8	12.6	73.2	10.9	19.2
Oct	19.3	5.5	21.3	18.0	33.2	12.6	73.2	11.0	19.2
Nov	19.4	5.7	21.6	17.9	32.6	12.7	72.8	10.8	19.3
Dec	19.6	5.5	21.8	17.4	32.6	12.6	73.7	10.8	19.3
NON-INDIGENOUS (%)									
<b>2008</b>	76.8	87.4	81.9	83.5	67.0	84.9	22.9	82.6	78.6
<b>2009</b>	72.3	85.2	80.7	82.3	64.8	83.9	23.1	83.7	76.3
<b>2010</b>	72.6	89.6	79.0	81.3	66.5	84.4	28.0	81.4	77.1
<b>2009</b>									
Dec Qtr	70.9	90.6	79.9	81.6	65.8	82.9	27.3	82.2	76.7
<b>2010</b>									
Mar Qtr	70.9	90.7	79.4	81.2	66.0	82.4	28.0	81.9	76.6
Jun Qtr	70.4	89.3	79.2	81.0	66.3	84.4	28.0	82.1	76.3
Sep Qtr	74.1	88.7	79.0	81.1	66.6	85.1	29.1	81.8	77.5
Dec Qtr	75.3	89.8	78.5	81.7	67.0	85.5	26.8	79.8	78.1
Oct	75.0	89.2	78.7	81.5	66.6	85.7	26.8	79.7	77.9
Nov	75.4	90.9	78.4	81.5	67.3	85.5	27.2	80.3	78.3
Dec	75.5	89.4	78.2	81.9	67.2	85.4	26.3	79.4	78.1
UNKNOWN (%)									
<b>2008</b>	5.5	8.2	—	0.7	0.3	3.6	0.1	7.8	3.3
<b>2009</b>	10.2	9.7	—	1.1	0.4	3.4	0.1	5.3	5.1
<b>2010</b>	8.9	4.9	—	0.8	0.2	2.9	—	8.2	3.9
<b>2009</b>									
Dec Qtr	11.3	4.0	—	1.3	0.3	4.4	—	6.9	4.6
<b>2010</b>									
Mar Qtr	11.3	3.9	—	0.9	0.4	5.3	—	8.0	4.6
Jun Qtr	11.8	5.2	—	1.0	0.1	2.7	—	7.6	4.8
Sep Qtr	6.9	5.7	—	0.7	0.1	2.0	—	8.1	3.3
Dec Qtr	5.2	4.6	—	0.6	0.1	1.9	—	9.3	2.7
Oct	5.7	5.3	—	0.5	0.1	1.7	—	9.3	2.9
Nov	5.2	3.3	—	0.6	0.1	1.9	—	8.9	2.4
Dec	4.9	5.1	—	0.6	0.2	2.0	—	9.8	2.7

— nil or rounded to zero (including null cells)

(a) Figures include persons with breached or suspended orders, with the exception of Vic. and Tas.

(b) Figures for the quarter and year for first day of the month counts are calculated as a simple average – see Explanatory Notes, paragraph 5.

(c) Data movements may be influenced by data entry delays – see Explanatory Notes, paragraph 30.

(d) Data is subject to processing delays of 4 to 6 weeks – see Explanatory Notes, paragraph 33.

(e) Excludes bail data for the December quarter 2009 – see Explanatory Notes paragraph 35.

(f) See footnotes c-e.



## GLOSSARY

<b>Aboriginal and Torres Strait Islander prisoner</b>	A prisoner who self-identifies as being of Aboriginal or Torres Strait Islander origin, or both.
<b>Bail</b>	This is generally a pre-sentence option where a person is released into the community for a period before they appear in court for trial or final sentencing. Bail orders can require a financial surety to be lodged with the court, and a number of conditions including supervision and residential requirements designed to ensure the re-appearance of the person at court. Bail counts are available only in states and territories where bail orders are supervised by corrective services. Bail is a sub-category of Supervision where the person is under the supervision of corrective services ( <i>see</i> Supervision).
<b>Community-based corrections</b>	This refers to the community-based management of court-ordered sanctions, post-prison administrative arrangements and fine conversions, which principally involve the provision of one or more of the following activities: supervision, programs or community work.
<b>Community service</b>	This category of community-based corrections orders includes sentencing options requiring offenders to undertake a specified number of hours of unpaid, supervised work to benefit the community on an approved project. Community service is a sub-category of Reparation ( <i>see</i> Reparation).
<b>Corrective services custody</b>	Confinement in a place intended primarily for the purpose of confining prisoners, such as a prison, prison farm, Periodic Detention Centre or Community Custody Centre.
<b>Federal sentenced prisoner</b>	Persons charged and sentenced under a Commonwealth statute or transferred from another country to serve their sentence in Australia.
<b>Fine option</b>	A community-based sentence type where the offender is serving a sentence in default of a fine. In most jurisdictions this order type requires an offender to complete community service as a reparatory act. Fine option is a sub-category of Reparation ( <i>see</i> Reparation).
<b>Full-time prison custody</b>	A type of custody where a prisoner is required to be held in custody on a full-time basis. This includes prisons, Queensland Community Custody Centres and work outreach camps. Full-time prison custody excludes periodic detention ( <i>see</i> Periodic detention).
<b>Home detention</b>	( <i>see</i> Restricted movement)
<b>Legal status</b>	A person may be either sentenced or unsentenced depending on the warrant(s) or court order(s) that provide the legal basis for the administration of the person through the criminal justice system.
<b>Non-Indigenous</b>	A prisoner who does not identify as being of Aboriginal and/or Torres Strait Islander origin.
<b>Open custody</b>	Refers to prisoners housed in minimum security custodial facilities that do not require them to be confined by a secure perimeter physical barrier, irrespective of whether a physical barrier exists.
<b>Parole</b>	A parole order is made following a period of imprisonment and requires an offender to be subject to supervision in the community. Additional conditions may also be applied such as programs, counselling or drug testing. Parole is a sub-category of Supervision ( <i>see</i> Supervision).
<b>Periodic detention</b>	A type of custody or order where a sentenced prisoner is required to be held in custody on a part-time basis. Currently this consists of two consecutive days in a one-week period, while remaining at liberty during the rest of the week.
<b>Prisoner</b>	A person held in custody. For the purposes of this collection, prisoners are those whose confinement is the responsibility of a corrective services agency.
<b>Remand</b>	( <i>see</i> Unsentenced)

## GLOSSARY *continued*

<b>Reparation</b>	Reparation refers to all offenders with an order that requires them to undertake unpaid, justice agency-approved community service work.
<b>Restricted movement</b>	This refers to persons who are subject to a system of restricted movement, including supervision and/or electronic monitoring. This category includes home detention that may restrict residence to a nominated place. Restricted movement can be either a pre-sentence or post-sentence order.
<b>Secure custody</b>	Refers to prisoners housed in medium or maximum security custodial facilities requiring them to be confined by a secure physical barrier.
<b>Sentenced</b>	A legal status indicating that a person has received a custodial or community-based order from a court in response to a conviction for an offence.
<b>Sentenced prisoner reception</b>	Refers to entry into corrective services custody from the community, having received a sentence of imprisonment as an outcome of a court proceeding; or persons who are sentenced to custody while in custody on remand (i.e. changed status from a remand to a sentenced prisoner); or persons entering custody as a result of defaulting on the payment of a fine. Sentenced prisoners in custody who receive a further sentence of imprisonment are not counted as sentenced receptions.
<b>Sentenced probation</b>	A supervision order made following an original sentence handed down in court following conviction. A probation order generally requires 'good behaviour' and compliance with the directions of supervisors. The order may also require compliance with conditions such as program attendance and residential requirements.
<b>Supervision (compliance)</b>	This includes community-based orders other than those categorised as restricted movement or reparation (e.g. parole, bail and sentenced probation).
<b>Unsentenced</b>	A legal status indicating that a person is confined to custody or supervision while awaiting the outcome of their trial.



## FOR MORE INFORMATION . . .

*INTERNET*      **www.abs.gov.au** the ABS website is the best place for data from our publications and information about the ABS.

### INFORMATION AND REFERRAL SERVICE

Our consultants can help you access the full range of information published by the ABS that is available free of charge from our website. Information tailored to your needs can also be requested as a 'user pays' service. Specialists are on hand to help you with analytical or methodological advice.

*PHONE*                      1300 135 070

*EMAIL*                      [client.services@abs.gov.au](mailto:client.services@abs.gov.au)

*FAX*                              1300 135 211

*POST*                          Client Services, ABS, GPO Box 796, Sydney NSW 2001

## FREE ACCESS TO STATISTICS

All statistics on the ABS website can be downloaded free of charge.

*WEB ADDRESS*      [www.abs.gov.au](http://www.abs.gov.au)